

HVAC EQUIPMENT





HAVE YOU VISITED OUR NEW WEBSITE?

www.beijerref.com.au



BUY ONLINE

REGISTER TODAY FOR ACCESS

LOGIN ADVANTAGES:

- ✓ EXPRESS SHOPPING
- ✓ SAVE YOUR DATA AND SETTINGS
- ✓ ORDER OVERVIEW AND SHIPPING INFORMATION
- ✓ MANAGE YOUR NEWSLETTER SUBSCRIPTION

BEIJER REF AUSTRALIA BRANCHES

HEAD OFFICE

2 Kirby Place
Bankstown Aerodrome, NSW 2200
Ph : 02 9774 7155



QUEENSLAND

Beijer Ref Brisbane

Unit 8, 576 Boundary Road
Archerfield, QLD 4108
Ph: 07 3850 5555

Beijer Ref Gladstone

116B Hanson Road
Gladstone, QLD 4680
Ph: 07 4972 3249

Beijer Ref Geebung

Unit 11a, 229 Robinson Road
Geebung, QLD 4034
Ph: 07 3216 5999

Beijer Ref Rockhampton

296 Denison Street
Rockhampton, QLD 4700
Ph: 07 4927 3648

Beijer Ref Southport

25 Olympic Circuit
Southport, QLD 4215
Ph: 07 5571 2622

Beijer Ref Toowoomba

10 Aspect Street
Toowoomba, QLD 4350
Ph: 07 4632 3922

NEW SOUTH WALES

Bankstown Flagship Store

2 Kirby Place
Bankstown Aerodrome, NSW
2200
Ph: 02 9774 7155

Beijer Ref Auburn

3 Short Street
Auburn, NSW 2144
Ph: 02 8756 4000

Beijer Ref Albury

1/826 Hope Court
Albury, NSW 2640
Ph: 02 6025 9911

Beijer Ref Campbelltown

Unit 6 & 7, 5 Harbord Road,
Campbelltown, NSW 2560
Ph: 02 4627 9661

VICTORIA

Beijer Ref West Melbourne

10/88 Dynon Road
West Melbourne, VIC 3003
Ph: 03 9371 1300

Beijer Ref Thomastown

52 Lucknow Crescent
Thomastown, VIC 3074
Ph: 03 9469 5881

Beijer Ref Bendigo

51A Breen Street
Golden Square, VIC 3550
Ph: 03 5444 1720

Beijer Ref Clayton

160 Wellington Road
Clayton, VIC 3168
Ph: 03 9562 2666

SOUTH AUSTRALIA

Beijer Ref Adelaide

80 Orsmond Street
Hindmarsh, SA 5007
Ph: 08 8340 4594

WESTERN AUSTRALIA

Beijer Ref Perth

15 Pearson Way
Osborne Park, WA 6017
Ph: 08 9445 2399

Beijer Ref Canningvale

Unit 4, 1-5 Sorbonne Crescent
Canningvale, WA 6155
Ph: 08 9455 7477

INDEX QUICK REFERENCE

- SPLIT SYSTEMS
- MULTI SPLIT SYSTEMS
- BULKHEAD SYSTEMS
- DUCTED SYSTEMS
- CONTROL SYSTEMS
- FLOOR STANDING SYSTEMS
- CEILING CASSETTE SYSTEMS
- CEILING SUSPENDED SYSTEMS
- WINDOW UNITS
- VRF SYSTEMS
- CHILLERS
- AIR CURTAINS

HVAC EQUIPMENT

PAGE 5 - 34



- TOYO DUCT & BASES
- MOUNTING BRACKETS
- CONDENSER CAGES
- COMPACT PUMPS
- CONDENSATE PUMPS
- PERISTALTIC PUMPS
- UNDER-CABINET PUMPS
- DISPOSABLE AIR FILTERS

HVAC INSTALLATION

PAGE 35 - 45



INDEX ALPHABETICAL

A

AIR CURTAINS	33
GREE FM SERIES AIR CURTAINS	33

B

BULKHEAD SYSTEM AIR CONDITIONERS	16
MITSUBISHI HEAVY INDUSTRIES SRR-ZS-W SERIES (REVERSE CYCLE)	16
MITSUBISHI HEAVY INDUSTRIES SRR-ZM-S SERIES (REVERSE CYCLE)	16

C

CEILING CASSETTE SYSTEM AIR CONDITIONERS	22
GREE CEILING CASSETTE SYSTEM (REVERSE CYCLE)	22
MITSUBISHI HEAVY INDUSTRIES FDT-C SERIES (REVERSE CYCLE)	22
MITSUBISHI HEAVY INDUSTRIES FDT SERIES (REVERSE CYCLE)	23

CEILING SUSPENDED SYSTEM AIR CONDITIONERS	24
GREE FLOOR/CEILING UNITS	24
FLEXIBLE INSTALLATION	24
MITSUBISHI HEAVY INDUSTRIES FDE SERIES (REVERSE CYCLE)	25
COMPACT PUMPS	39
BLUE DIAMOND COMPACT PUMPS	39
ASPEN COMPACT PUMPS	40
CONDENSATE PUMPS	41
SAUERMANN MINI CONDENSATE PUMPS	41
ASPEN TANKS CONDENSATE PUMPS	42
ASPEN PUMP ACCESSORIES	42
CONDENSER CAGES	38
BIG MAN CONDENSER CAGES	38
CONTROL SYSTEMS	20
GREE ZONE CONTROL SYSTEM	20

D

DISPOSABLE AIR FILTERS	45
DUCTED SYSTEM AIR CONDITIONERS	17
GREE DUCTED SYSTEM (REVERSE CYCLE)	17
MITSUBISHI HEAVY INDUSTRIES FDU SERIES (REVERSE CYCLE)	18
MITSUBISHI HEAVY INDUSTRIES FDU-A SERIES (REVERSE CYCLE)	19
MITSUBISHI HEAVY INDUSTRIES FDU-M SERIES (REVERSE CYCLE)	19
DUCTING	34
TOYO DUCTING	34
TOYO DUCT ACCESSORIES	34
COLORBOND TRUNKING	35
COLORBOND HAT-SECTION	35

INDEX ALPHABETICAL

F

FLOOR STANDING SYSTEM AIR CONDITIONERS	20
GREE FLOOR STANDING SYSTEM (REVERSE CYCLE)	20
MITSUBISHI HEAVY INDUSTRIES SRF-ZMXA-S SERIES (REVERSE CYCLE)	20

M

MOUNTING BRACKETS	36
FREDDOX	36
FREDDOX WALL MOUNTING BRACKETS SPLIT SYSTEM OUTDOOR UNIT	36
FREDDOX WALL MOUNTING BRACKETS SPLIT SYSTEM OUTDOOR UNIT - ADJUSTABLE BAR	36
MONKEYTOE	36
MONKEYTOE ADJUSTABLE MOUNTING SYSTEM	36
MOUNTING BASES	37
EVO-CRETE - OUTDOOR UNIT MOUNTING BASES	37
TOYO OUTDOOR UNIT BASES	37
ASPEN RUBBER MOUNTING FEET	37
MOUNTING BRACKETS	36
FREDDOX	36
FREDDOX WALL MOUNTING BRACKETS SPLIT SYSTEM OUTDOOR UNIT	36
FREDDOX WALL MOUNTING BRACKETS SPLIT SYSTEM OUTDOOR UNIT - ADJUSTABLE BAR	36
MONKEYTOE	36
MONKEYTOE ADJUSTABLE MOUNTING SYSTEM	36
MOUNTING BASES	37
EVO-CRETE - OUTDOOR UNIT MOUNTING BASES	37
TOYO OUTDOOR UNIT BASES	37
ASPEN RUBBER MOUNTING FEET	37
MULTI SPLIT SYSTEM AIR CONDITIONERS	10
GREE FREE MATCH (REVERSE CYCLE)	10
GREE FREE MATCH - COMPATIBLE INDOOR UNITS	10
OUTDOOR UNITS	10
INDOOR UNITS - WALL MOUNTED - LOMO	11
INDOOR UNITS - FLOOR STANDING	11
INDOOR UNITS - DUCTED	11
INDOOR UNITS - CASSETTE	11

MITSUBISHI HEAVY INDUSTRIES SCM-ZM/ZS-S SERIES (REVERSE CYCLE)	12
MITSUBISHI HEAVY INDUSTRIES SCM-ZM/ZS-S SERIES - COMPATIBLE INDOOR UNITS	12
OUTDOOR UNITS	12
MITSUBISHI HEAVY INDUSTRIES SCM-ZM/ZS-S SERIES (REVERSE CYCLE)	13
INDOOR UNITS - WALL MOUNTED - SRK-ZMXA-S SERIES	13
INDOOR UNITS - FLOOR STANDING - SRF-ZMXA-S SERIES	13
INDOOR UNITS - BULKHEAD - SRR-ZM-S SERIES	13
INDOOR UNITS - CASSETTE - FDTC SERIES	13
INDOOR UNITS - DUCTED - FDUM SERIES	13
MITSUBISHI HEAVY INDUSTRIES SCM-ZS-W SERIES (REVERSE CYCLE)	14
MITSUBISHI HEAVY INDUSTRIES SCM-ZS-W SERIES - COMPATIBLE INDOOR UNITS	14
OUTDOOR UNITS	14
INDOOR UNITS - WALL MOUNTED - AVANTI® SERIES	15
INDOOR UNITS - WALL MOUNTED - AVANTI PLUS® SERIES	15
INDOOR UNITS - BULKHEAD - SRR-ZS-W SERIES	15
INDOOR UNITS - CASSETTE - FDTC SERIES	15

P

PERISTALTIC PUMPS	43
ASPEN PERISTALTIC PUMPS	43
SAUERMANN PERISTALTIC PUMPS	43

S

SPLIT SYSTEM AIR CONDITIONERS	5
GREE BORA (REVERSE CYCLE)	5
REVERSE CYCLE	5
COOLING ONLY	5
GREE LOMO (REVERSE CYCLE)	6
MITSUBISHI HEAVY INDUSTRIES SRK-ZMP-S SERIES (REVERSE CYCLE)	7
MITSUBISHI HEAVY INDUSTRIES AVANTI® SERIES (REVERSE CYCLE)	7
MITSUBISHI HEAVY INDUSTRIES BRONTE® SERIES (REVERSE CYCLE)	8
MITSUBISHI HEAVY INDUSTRIES AVANTI PLUS® SERIES (REVERSE CYCLE)	8
MITSUBISHI HEAVY INDUSTRIES AVANTI® SERIES (COOLING ONLY)	9
MITSUBISHI HEAVY INDUSTRIES BRONTE® SERIES (COOLING ONLY)	9

U

UNDER-CABINET PUMPS	44
ASPEN UNDER-CABINET PUMPS	44
SAUERMANN TANK PUMPS	44
SAUERMANN SUPERMARKET PUMPS	44

V

VRF SYSTEMS	27
MITSUBISHI HEAVY INDUSTRIES HIGH PERFORMANCE 1:1 KX SYSTEMS - WALL MOUNTED (REVERSE CYCLE)	27
MITSUBISHI HEAVY INDUSTRIES HIGH PERFORMANCE 1:1 KX SYSTEMS - DUCTED (REVERSE CYCLE)	28
MITSUBISHI HEAVY INDUSTRIES HIGH PERFORMANCE 1:1 KX SYSTEMS - CEILING SUSPENDED (REVERSE CYCLE)	29
MITSUBISHI HEAVY INDUSTRIES HIGH PERFORMANCE 1:1 KX SYSTEMS - TWO WAY CASSETTE (REVERSE CYCLE)	30
MITSUBISHI HEAVY INDUSTRIES HIGH PERFORMANCE 1:1 KX SYSTEMS - FOUR WAY CASSETTE (REVERSE CYCLE)	31

W

WATER CHILLERS	32
GREE A,B & D-SERIES WATER CHILLERS	32
WINDOW UNIT AIR CONDITIONERS	26
GREE AOKI (REVERSE CYCLE)	26
REVERSE CYCLE	26
COOLING ONLY	26

SPLIT SYSTEM AIR CONDITIONERS

GREE BORA (REVERSE CYCLE)



Quiet and energy efficient, the Gree Bora range is perfect entry-level choice for a variety of applications. The Bora range comes with Wi-Fi control and mini photocatalytic filters as standard, and is backed by Gree's industry leading 6 year warranty in both residential and commercial applications.

- Anti-corrosive coating on all printed circuit boards to help protect the electronics
- Dry connection for gate card or remote on/off operation, great for schools and hotels
- Blue fin coils for corrosion protection
- Intelligent Auto Reset, with power off memory function

REVERSE CYCLE

ITEM NO.	CAPACITY (kW)		POWER SUPPLY	DIMENSIONS (mm)		WEIGHT (kg)		CONNECTIONS (mm)	
	COOLING	HEATING	(V, Ph)	INDOOR	OUTDOOR	INDOOR	OUTDOOR	LIQUID	GAS
AC4200	2.5	3.0	220-240 , 1	289×849×215	540×782×320	10.5	29.0	6.35	9.52
AC4202	3.4	3.7	220-240 , 1	289×849×215	596×848×320	10.5	33.0	6.35	9.52
AC4204	5.2	5.6	220-240 , 1	300×970×225	646×912×373	13.5	42.0	6.35	12.70
AC4206	7.1	7.1	220-240 , 1	329×1122×247	646×912×373	16.0	43.5	6.35	15.88
AC7209	9.4	10.3	220-240V, 1	326×1350×253	790×980×427	19.5	65.5	6.35	15.88

COOLING ONLY

ITEM NO.	CAPACITY (kW)	POWER SUPPLY	DIMENSIONS (mm)		WEIGHT (kg)		CONNECTIONS (mm)	
		(V, Ph)	INDOOR	OUTDOOR	INDOOR	OUTDOOR	LIQUID	GAS
GWC09AAC-K6DNA1F	2.5	220-240 , 1	289×849×215	540×782×320	10.5	29.0	6.35	9.52
GWC12AAC-K6DNA1F	3.4	220-240 , 1	289×849×215	596×848×320	10.5	32.0	6.35	9.52
GWC18AAD-K6DNA1F	5.2	220-240 , 1	300×970×225	646×912×373	13.5	38.0	6.35	12.70
GWC24AAE-K6DNA1F	7.1	220-240 , 1	329×1122×247	646×912×373	16.0	42.0	6.35	15.88

SPLIT SYSTEM AIR CONDITIONERS (CONT'D)

GREE LOMO (REVERSE CYCLE)



Gree Lomo features intelligent functions to produce improved efficiency and greater energy savings – ultimately delivering faster heating and cooling all year round! Ideal for a range of residential applications, the Lomo range also includes Wi-Fi controls as standard, making it even more convenient to enjoy year round comfort. Furthermore, the Lomo range is backed by Gree's industry leading 6 year warranty in both residential and commercial applications.

- Seven fan modes with noise reducing technology delivers perfect airflow with quiet operation
- Enjoy greater spread of air thanks to 3D airflow
- Intelligent defrosting reduces the number of defrost cycles and reduces energy waste
- Soft start software limits compressor start up current, while low voltage start up provides protection against brown outs and poor power supplies
- Mono / multi compatible

ITEM NO.	CAPACITY (kW)		POWER SUPPLY (V, Ph)	DIMENSIONS (mm)		WEIGHT (kg)		CONNECTIONS (mm)	
	COOLING	HEATING		INDOOR	OUTDOOR	INDOOR	OUTDOOR	LIQUID	GAS
AC7311	2.0	2.7	220-240 , 1	289×845×209	540×782×320	10.0	29.0	6.35	9.52
AC7312	2.5	3.0	220-240 , 1	289×845×209	540×782×320	10.0	30.0	6.35	9.52
AC7313	3.4	4.0	220-240 , 1	289×845×209	596×848×320	10.5	33.0	6.35	9.52
AC7315	5.3	5.6	220-240 , 1	300×970×224	700×965×396	13.5	45.0	6.35	12.70
AC7316	6.2	7.1	220-240 , 1	325×1078×246	700×965×396	15.5	53.5	6.35	12.70
AC7317	7.1	8.0	220-240 , 1	325×1078×246	700×965×396	16.0	53.5	6.35	15.88
AC7318	8.5	9.0	220-240 , 1	325×1078×246	790×980×427	16.0	65.0	6.35	15.88

SPLIT SYSTEM AIR CONDITIONERS

mitsubishi heavy industries SRK-ZMP-S SERIES (REVERSE CYCLE)



AIR CONDITIONING



With a 2.0kW heating capacity, a 1.7kW cooling capacity and a huge range of features and functions within a sleek and compact design, the SRK17ZMP reverse cycle split system air-conditioner from Mitsubishi Heavy Industries is the perfect heating and cooling solution for smaller spaces.

- Reverse Cycle model
- Rapid room cooling/heating with Hi Power mode
- Energy saving with Economy mode
- Dehumidification with Dry Operation mode
- Optional Wi-Fi control

ITEM NO.	CAPACITY (kW)		POWER SUPPLY	DIMENSIONS (mm)		WEIGHT (kg)		CONNECTIONS (mm)	
	COOLING	HEATING	(V, Ph)	INDOOR	OUTDOOR	INDOOR	OUTDOOR	LIQUID	GAS
SRK17ZMP-SET	1.7	2.0	240 , 1	262x769x210	540x645x275	6.9	25.0	6.35	9.52

mitsubishi heavy industries AVANTI® SERIES (REVERSE CYCLE)



AIR CONDITIONING



AVANTI® Series of wall mounted split system air conditioners seamlessly combines European design with superior Japanese engineering. Developed by award winning Italian designers TENSA, the AVANTI® series features a sleek and stylish design and incorporates a range of convenient features and functions. It's also compatible with Mitsubishi Heavy Industries' new Wi-Fi solution and can be easily controlled with the IntesisHome app via your iPhone, iPad or Android device.

- Modern and stylish design
- 3D Auto airflow for effective and even air distribution
- Allergen clear system to capture and eliminate allergens
- Energy efficient R32 refrigerant
- Optional Wi-Fi control

ITEM NO.	CAPACITY (kW)		POWER SUPPLY	DIMENSIONS (mm)		WEIGHT (kg)		CONNECTIONS (mm)	
	COOLING	HEATING	(V, Ph)	INDOOR	OUTDOOR	INDOOR	OUTDOOR	LIQUID	GAS
DXK06ZSA-W-SET	2.0	2.7	240 , 1	290x870x230	540x780x290	9.5	33.0	6.35	9.52
DXK09ZSA-W-SET	2.5	3.2	240 , 1	290x870x230	540x780x290	10.0	36.0	6.35	9.52
DXK12ZSA-W-SET	3.5	3.7	240 , 1	290x870x230	540x780x290	10.0	36.0	6.35	9.52
DXK18ZSA-W-SET	5.0	5.8	240 , 1	290x870x230	640x800x290	10.0	43.5	6.35	12.70

SPLIT SYSTEM AIR CONDITIONERS (CONT'D)

MITSUBISHI HEAVY INDUSTRIES BRONTE® SERIES (REVERSE CYCLE)



AIR CONDITIONING



Recommended by CHOICE®, the BRONTE® series is the ideal solution for heating and cooling of larger spaces within your home. Incorporating the same advanced fan blade technology used in the development of jet engines, the BRONTE® series features a market leading long reach airflow allowing it to efficiently deliver a powerful yet quiet and evenly distributed airflow. Packed with a range of convenient features including the Allergen Clear System, 3D Auto Mode and a range of timer functions, the BRONTE® series is the ideal addition to any modern home.

- Advanced jet air technology delivering long reach airflow
- Allergen clear system to capture and eliminate allergens
- Wide range of convenient timer functions
- Energy efficient R32 refrigerant
- Optional Wi-Fi control

ITEM NO.	CAPACITY (kW)		POWER SUPPLY (V, Ph)	DIMENSIONS (mm)		WEIGHT (kg)		CONNECTIONS (mm)	
	COOLING	HEATING		INDOOR	OUTDOOR	INDOOR	OUTDOOR	LIQUID	GAS
DXK21ZRA-W-SET	6.3	7.1	240 , 1	339x1197x262	640x800x290	15.5	45.0	6.35	12.70
DXK24ZRA-W-SET	7.1	8.0	240 , 1	339x1197x262	750x880x340	15.5	58.0	6.35	15.88
DXK28ZRA-W-SET	8.0	9.0	240 , 1	339x1197x262	750x880x340	15.5	58.0	6.35	15.88
DXK33ZRA-W-SET	9.5	10.3	240 , 1	339x1197x262	845x970x370	15.5	58.0	9.52	15.88

MITSUBISHI HEAVY INDUSTRIES AVANTI PLUS® SERIES (REVERSE CYCLE)



AIR CONDITIONING



With industry leading energy ratings the Avanti PLUS® is Mitsubishi Heavy Industries' Platinum Series and is considered one of the most efficient split systems on the market. Whisper quiet and incorporating a range of energy saving and convenient features and functions such as motion sensor, eco-operation and adjustable LED display the Avanti PLUS® split system range is perfect for a variety of spaces.

- Extremely high efficiency energy ratings
- Whisper quiet operation
- Energy saving motion sensor and eco operation
- Clean Air Technology to capture smoke particles and deliver allergen and odour free air
- Improved auto mode allowing for precise temperature control

ITEM NO.	CAPACITY (kW)		POWER SUPPLY (V, Ph)	DIMENSIONS (mm)		WEIGHT (kg)		CONNECTIONS (mm)	
	COOLING	HEATING		INDOOR	OUTDOOR	INDOOR	OUTDOOR	LIQUID	GAS
SRK20ZSXA-W-SET	2.0	2.7	240 , 1	305x920x220	640x800x290	13.0	43.0	6.35	9.52
SRK25ZSXA-W-SET	2.5	3.2	240 , 1	305x920x220	640x800x290	13.0	43.0	6.35	9.52
SRK35ZSXA-W-SET	3.5	4.3	240 , 1	305x920x220	640x800x290	13.0	43.0	6.35	9.52
SRK50ZSXA-W-SET	5.0	6.0	240 , 1	305x920x220	640x800x290	13.0	45.0	6.35	12.70
SRK60ZSXA-W-SET	6.0	6.8	240 , 1	305x920x220	640x800x290	13.0	45.0	6.35	12.70

SPLIT SYSTEM AIR CONDITIONERS (CONT'D)

MITSUBISHI HEAVY INDUSTRIES AVANTI® SERIES (COOLING ONLY)



AIR CONDITIONING



AVANTI® Series of wall mounted split system air conditioners seamlessly combines European design with superior Japanese engineering. Developed by award winning Italian designers TENZA, the AVANTI® series features a sleek and stylish design and incorporates a range of convenient features and functions. It's also compatible with Mitsubishi Heavy Industries' new Wi-Fi solution and can be easily controlled with the IntesisHome app via your iPhone, iPad or Android device.

- Modern and stylish design
- 3D Auto airflow for effective and even air distribution
- Allergen clear system to capture and eliminate allergens
- Energy efficient R32 refrigerant
- Optional Wi-Fi control

ITEM NO.	CAPACITY (kW)	POWER SUPPLY	DIMENSIONS (mm)		WEIGHT (kg)		CONNECTIONS (mm)	
	COOLING	(V, Ph)	INDOOR	OUTDOOR	INDOOR	OUTDOOR	LIQUID	GAS
SRK10YSA-W-SET	2.5	240 , 1	290x870x230	540x780x290	10.0	33.5	6.35	9.52
SRK13YSA-W-SET	3.5	240 , 1	290x870x230	540x780x290	10.0	33.5	6.35	9.52
SRK18YSA-W-SET	5.0	240 , 1	290x870x230	640x800x290	10.0	40.0	6.35	12.70

MITSUBISHI HEAVY INDUSTRIES BRONTE® SERIES (COOLING ONLY)



AIR CONDITIONING



Recommended by CHOICE®, the BRONTE® series is the ideal solution for heating and cooling of larger spaces within your home. Incorporating the same advanced fan blade technology used in the development of jet engines, the BRONTE® series features a market leading long reach airflow allowing it to efficiently deliver a powerful yet quiet and evenly distributed airflow. Packed with a range of convenient features including the Allergen Clear System, 3D Auto Mode and a range of timer functions, the BRONTE® series is the ideal addition to any modern home.

- Advanced jet air technology delivering long reach airflow
- Allergen clear system to capture and eliminate allergens
- Wide range of convenient timer functions
- Energy efficient R32 refrigerant
- Optional Wi-Fi control

ITEM NO.	CAPACITY (kW)	POWER SUPPLY	DIMENSIONS (mm)		WEIGHT (kg)		CONNECTIONS (mm)	
	COOLING	(V, Ph)	INDOOR	OUTDOOR	INDOOR	OUTDOOR	LIQUID	GAS
SRK24YRA-W-SET	7.1	240 , 1	339x1197x262	750x880x340	15.5	58.0	6.35	15.88

MULTI SPLIT SYSTEM AIR CONDITIONERS

GREE FREE MATCH (REVERSE CYCLE)



The Gree Free Match System provides the flexibility of heating or cooling an entire home or office with up to five indoor units with just one outdoor unit, resulting in less noise and less space taken up by large outdoor units all powering multiple indoor units. With four different types of indoor units encompassing seventeen different models, each indoor unit has its own controller, allowing occupants to perfectly customise the temperature in each room without affecting the other rooms.

- Greater energy savings thanks to Gree's G10 inverter technology, saving up to 30% versus traditional fixed speed systems
- Wide voltage range operation protects against damage in voltage variations
- Auto restart technology allows indoor units to restart in the same mode after a power outage
- State-of-the-art photocatalytic filtration system purifies air quality by eliminating 99.9% of bacteria and contaminants

GREE FREE MATCH - COMPATIBLE INDOOR UNITS

OUTDOOR UNIT	INDOOR UNITS		WALL MOUNTED LOMO					FLOOR STANDING				DUCTED						CASSETTE		
	MIN	MAX	CAPACITY																	
			2.5	3.5	5.2	6.2	7.1	2.5	3.5	5.0	7.1	2.5	3.5	4.5	6.0	7.0	3.5	4.5	7.1	
AC5601	2	2	■	■				■	■			■	■				■			
AC5602	2	3	■	■	■			■	■	■		■	■	■			■	■		
AC5603	2	4	■	■	■			■	■	■		■	■	■			■	■		
AC4604	2	4	■	■	■	■	■	■	■	■	■	■	■	■	■	■	■	■	■	
AC5605	2	5	■	■	■	■	■	■	■	■	■	■	■	■	■	■	■	■	■	

OUTDOOR UNITS

ITEM NO.	CAPACITY (kW)		POWER SUPPLY (V, Ph)	DIMENSIONS (mm)	WEIGHT (kg)	CONNECTIONS (mm)		PORT	
	COOLING	HEATING				LIQUID	GAS	MIN	MAX
AC5601	5.4	5.7	220-240 , 1	700x955x396	47.0	6.35	9.52	2	2
AC5602	7.3	8.8	220-240 , 1	790x980x427	59.0	6.35	9.52	2	3
AC5603	8.2	9.3	220-240 , 1	790x980x427	65.0	6.35	9.52	2	4
AC4604	10.3	11.2	220-240 , 1	1103x1087x440	89.0	6.35	9.52	2	4
AC5605	11.3	11.5	220-240 , 1	1103x1087x440	90.0	6.35	9.52	2	5



MULTI SPLIT SYSTEM AIR CONDITIONERS (CONT'D)
GREE FREE MATCH (REVERSE CYCLE - CONT'D)

INDOOR UNITS - WALL MOUNTED - LOMO

ITEM NO.	CAPACITY (kW)		POWER SUPPLY	DIMENSIONS	WEIGHT	CONNECTIONS (mm)	
	COOLING	HEATING	(V, Ph)	(mm)	(kg)	LIQUID	GAS
AC7340	2.5	3.0	220-240 , 1	289x845x209	10.0	6.35	9.52
AC7342	3.4	4.0	220-240 , 1	289x845x209	10.5	6.35	9.52
AC7344	5.2	5.6	220-240 , 1	300x970x224	13.5	6.35	12.70
AC7346	6.2	7.1	220-240 , 1	325x1078x246	15.5	6.35	12.70
AC7348	7.1	8.0	220-240 , 1	325x1078x246	16.0	6.35	15.88

INDOOR UNITS - FLOOR STANDING

ITEM NO.	CAPACITY (kW)		POWER SUPPLY	DIMENSIONS	WEIGHT	CONNECTIONS (mm)	
	COOLING	HEATING	(V, Ph)	(mm)	(kg)	LIQUID	GAS
GTH09BA-K3DNA1A/I	2.5	2.8	220-240 , 1	225x700x1220	40.0	6.35	9.52
GTH12BA-K3DNA1A/I	3.5	3.9	220-240 , 1	225x700x1220	40.0	6.35	9.52
GTH18BA-K3DNA1A/I	5.0	5.5	220-240 , 1	225x700x1220	40.0	6.35	12.70
GTH24BA-K3DNA1A/I	7.1	8.0	220-240 , 1	225x700x1220	45.0	9.52	15.88


INDOOR UNITS - DUCTED

ITEM NO.	CAPACITY (kW)		POWER SUPPLY	DIMENSIONS	WEIGHT	CONNECTIONS (mm)	
	COOLING	HEATING	(V, Ph)	(mm)	(kg)	LIQUID	GAS
AC5629	2.5	2.8	220-240 , 1	200x700x615	22.0	6.35	9.52
AC5631	3.5	3.8	220-240 , 1	200x700x615	23.0	6.35	9.52
AC5632	4.5	5.5	220-240 , 1	200x900x615	27.0	6.35	12.70
AC5633	6.0	6.6	220-240 , 1	200x1100x615	31.0	9.52	15.88
AC5634	7.0	8.0	220-240 , 1	200x1100x615	31.0	9.52	15.88


INDOOR UNITS - CASSETTE

ITEM NO.	CAPACITY (kW)		POWER SUPPLY	DIMENSIONS (mm)		WEIGHT (kg)		CONNECTIONS (mm)	
	COOLING	HEATING	(V, Ph)	INDOOR	panel	INDOOR	panel	LIQUID	GAS
AC5640	3.5	4.0	220-240 , 1	230x570x570	60x650x650	18.0	6.5	6.35	9.52
AC5641	4.5	5.0	220-240 , 1	230x570x570	60x650x650	18.0	6.5	6.35	12.70
AC5644	7.1	8.0	220-240 , 1	240x840x840	60x950x950	28.0	6.5	9.52	15.88



MULTI SPLIT SYSTEM AIR CONDITIONERS (CONT'D)
MITSUBISHI HEAVY INDUSTRIES SCM-ZM/ZS-S SERIES (REVERSE CYCLE)


AIR CONDITIONING



This powerful and quiet range of outdoor units offers seven capacity options and the ability to connect up to five indoor units, making it the perfect option to cool and heat an entire home or small commercial space; choose from five different types of indoor units in a wide range of capacities that allows for hundreds of heating and cooling solutions. The DC twin rotary compressor makes this unit highly efficient at the same time as limiting noise levels, minimizing the impact on occupant comfort. With each unit having independent control options, energy efficiency is maximised.

- Efficient and quiet operation.
- Smart energy use option.
- Individual indoor unit control for maximum occupant comfort.
- Long pipe runs available for flexible installation

MITSUBISHI HEAVY INDUSTRIES SCM-ZM/ZS-S SERIES - COMPATIBLE INDOOR UNITS

OUTDOOR UNIT	INDOOR UNITS		CONNECTION CAPACITY		WALL MOUNTED					FLOOR STANDING			BULKHEAD				CASSETTE				DUCTED
	MIN	MAX	MIN	MAX	SRK-ZMXA-S SERIES					SRF-ZMXA-S SERIES			SRR-ZM-S SERIES				FDTC SERIES				FDUM SERIES
					CAPACITY																
					2	2.5	3.5	5	6	2.5	3.5	5	2.5	3.5	5	6	2.5	3.5	5	6	5
SCM40ZS-S	2	2	4	6	■	■	■			■	■		■	■			■	■			
SCM45ZS-S	2	2	4.5	7	■	■	■			■	■	■	■	■			■	■			
SCM50ZS-S	2	3	4	8.5	■	■	■	■		■	■	■	■	■	■	■	■	■	■		■
SCM60ZM-S1	2	3	4	11	■	■	■	■	■	■	■	■	■	■	■	■	■	■	■	■	■
SCM71ZM-S1	2	4	7	12.5	■	■	■	■	■	■	■	■	■	■	■	■	■	■	■	■	■
SCM80ZM-S1	2	4	8	13.5	■	■	■	■	■	■	■	■	■	■	■	■	■	■	■	■	■
SCM100ZM-S	2	5	10	16	■	■	■	■	■	■	■	■	■	■	■	■	■	■	■	■	■

OUTDOOR UNITS

ITEM NO.	CAPACITY (kW)		POWER SUPPLY (V, Ph)	DIMENSIONS (mm)	WEIGHT (kg)	CONNECTION (mm)		PORTS	
	COOLING	HEATING				LIQUID	GAS	MIN	MAX
SCM40ZS-S	4.0	4.5	220-240 , 1	596x780x290	42.0	6.35	9.52	2	2
SCM45ZS-S	4.5	5.3	220-240 , 1	596x780x290	42.0	6.35	9.52	2	2
SCM50ZS-S	5.0	6.0	220-240 , 1	640x850x290	48.5	6.35	9.52	2	3
SCM60ZM-S1	6.0	6.8	220-240 , 1	640x850x290	49.0	6.35	9.52	2	3
SCM71ZM-S1	7.1	8.6	220-240 , 1	750x880x340	62.0	6.35	9.52	2	4
SCM80ZM-S1	8.0	9.3	220-240 , 1	750x880x340	62.0	6.35	9.52	2	4
SCM100ZM-S	10.0	12.0	220-240 , 1	945x970x370	92.0	6.35	9.52	2	5



MULTI SPLIT SYSTEM AIR CONDITIONERS (CONT'D)
MITSUBISHI HEAVY INDUSTRIES SCM-ZM/ZS-S SERIES (REVERSE CYCLE)

INDOOR UNITS - WALL MOUNTED - SRK-ZMXA-S SERIES

ITEM NO.	CAPACITY (kW)		POWER SUPPLY	DIMENSIONS	WEIGHT	CONNECTION (mm)	
	COOLING	HEATING	(V , Ph)	(mm)	(kg)	LIQUID	GAS
SRK20ZMXA-S	2.0	2.5	220-240 , 1	309x890x220	13.5	6.35	9.52
SRK25ZMXA-S	2.5	3.1	220-240 , 1	309x890x220	13.5	6.35	9.52
SRK35ZMXA-S	3.5	4.3	220-240 , 1	309x890x220	13.5	6.35	9.52
SRK50ZMXA-S	5.0	6.0	220-240 , 1	309x890x220	13.5	6.35	12.70
SRK60ZMXA-S	6.0	6.8	220-240 , 1	309x890x220	13.5	6.35	12.70


INDOOR UNITS - FLOOR STANDING - SRF-ZMXA-S SERIES

ITEM NO.	CAPACITY (kW)		POWER SUPPLY	DIMENSIONS	WEIGHT	CONNECTION (mm)	
	COOLING	HEATING	(V , Ph)	(mm)	(kg)	LIQUID	GAS
SRF25ZMXA-S	2.5	3.4	220-240 , 1	600x860x238	18.0	6.35	9.52
SRF35ZMXA-S	3.5	4.5	220-240 , 1	600x860x238	19.0	6.35	9.52
SRF50ZMXA-S	5.0	6.0	220-240 , 1	600x860x238	19.0	6.35	12.70


INDOOR UNITS - BULKHEAD - SRR-ZM-S SERIES

ITEM NO.	CAPACITY (kW)		POWER SUPPLY	DIMENSIONS	WEIGHT	CONNECTION (mm)	
	COOLING	HEATING	(V , Ph)	(mm)	(kg)	LIQUID	GAS
SRR25ZM-S	2.5	3.4	220-240 , 1	200x750x500	20.5	6.35	9.52
SRR35ZM-S	3.5	4.5	220-240 , 1	200x750x500	20.5	6.35	9.52
SRR50ZM-S	5.0	5.8	220-240 , 1	200x950x500	24.0	6.35	12.70
SRR60ZM-S	6.0	6.8	220-240 , 1	200x950x500	24.0	6.35	12.70


INDOOR UNITS - CASSETTE - FDTC SERIES

ITEM NO.	CAPACITY (kW)		POWER SUPPLY	DIMENSION (mm)		WEIGHT (kg)		CONNECTIONS (mm)	
	COOLING	HEATING	(V , Ph)	INDOOR	PANEL	INDOOR	PANEL	LIQUID	GAS
FDTC25VF	2.5	3.4	220-240 , 1	248x570x570	35x700x700	15.0	3.5	6.35	9.52
FDTC35VF	3.5	4.5	220-240 , 1	248x570x570	35x700x700	15.0	3.5	6.35	9.52
FDTC50VF	5.0	5.8	220-240 , 1	248x570x570	35x700x700	15.0	3.5	6.35	12.70
FDTC60VF	6.0	6.8	220-240 , 1	248x570x570	35x700x700	15.0	3.5	6.35	12.70


INDOOR UNITS - DUCTED - FDUM SERIES

ITEM NO.	CAPACITY (kW)		POWER SUPPLY	DIMENSIONS	WEIGHT	CONNECTION (mm)	
	COOLING	HEATING	(V , Ph)	(mm)	(kg)	LIQUID	GAS
FDUM50VF	5.0	5.4	220-240 , 1	280x750x635	29.0	6.35	12.70



MULTI SPLIT SYSTEM AIR CONDITIONERS (CONT'D)

MITSUBISHI HEAVY INDUSTRIES SCM-ZS-W SERIES (REVERSE CYCLE)



AIR CONDITIONING



The SCM-ZS series of multi split systems is compact and efficient and with the ability to connect up to five indoor units to one outdoor unit, is a versatile solution for heating and cooling multiple small to mid-sized rooms. The SCM-ZS series' compact design allows for installation in small spaces such as balconies and verandas while the highly efficient DC twin rotary compressor means the unit is super quiet, ensuring no disruptions. With each indoor unit having independent control options allowing for individual temperature, air flow, timers and other functions the SCM-ZS series of multi-splits ensures everyone's comfort all year round.

- 17 models of indoor units to choose from.
- Efficient and quiet operation.
- Smart energy use option.
- Individual indoor unit control for maximum occupant comfort.

MITSUBISHI HEAVY INDUSTRIES SCM-ZS-W SERIES - COMPATIBLE INDOOR UNITS

OUTDOOR UNIT	INDOOR UNITS		CONNECTION CAPACITY		WALL MOUNTED									BULKHEAD		CASSETTE	
	MIN	MAX	MIN	MAX	AVANTI® SERIES				AVANTI PLUS® SERIES					SRR-ZS-W SERIES		FDTC SERIES	
					CAPACITY									2.5	3.5	2.5	3.5
					2.0	2.5	3.5	5.0	2.0	2.5	3.5	5.0	6.0				
SCM40ZS-W	2	2	4.0	6.0	■	■	■		■	■	■			■	■	■	■
SCM45ZS-W	2	2	4.5	7.0	■	■	■		■	■	■			■	■	■	■
SCM50ZS-W	2	3	4.0	8.5	■	■	■	■	■	■	■	■		■	■	■	■
SCM60ZS-W	2	3	4.0	11.0	■	■	■	■	■	■	■	■	■	■	■	■	■
SCM71ZS-W	2	4	7.0	12.5	■	■	■	■	■	■	■	■	■	■	■	■	■
SCM80ZS-W	2	4	8.0	13.5	■	■	■	■	■	■	■	■	■	■	■	■	■

OUTDOOR UNITS

ITEM NO.	CAPACITY (kW)		POWER SUPPLY (V , Ph)	DIMENSIONS (mm)	WEIGHT (kg)	CONNECTION (mm)		PORTS	
	COOLING	HEATING				LIQUID	GAS	MIN	MAX
SCM40ZS-W	4.0	4.5	220-240 , 1	596x780x290	40.0	6.35	9.52	2	2
SCM45ZS-W	4.5	5.3	220-240 , 1	596x780x290	40.0	6.35	9.52	2	2
SCM50ZS-W	5.0	6.0	220-240 , 1	640x850x290	48.5	6.35	9.52	2	3
SCM60ZS-W	6.0	6.8	220-240 , 1	640x850x290	48.5	6.35	9.52	2	3
SCM71ZS-W	7.1	8.6	220-240 , 1	750x880x340	61.0	6.35	9.52	2	4
SCM80ZS-W	8.0	9.3	220-240 , 1	750x880x340	61.0	6.35	9.52	2	4



MULTI SPLIT SYSTEM AIR CONDITIONERS (CONT'D)
MITSUBISHI HEAVY INDUSTRIES SCM-ZS-W SERIES (REVERSE CYCLE - CONT'D)


AIR CONDITIONING

INDOOR UNITS - WALL MOUNTED - AVANTI® SERIES

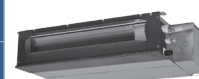
ITEM NO.	CAPACITY (kW)		POWER SUPPLY (V , Ph)	DIMENSIONS (mm)	WEIGHT (kg)	CONNECTION (mm)	
	COOLING	HEATING				LIQUID	GAS
SRK20ZSA-W	2.0	3.0	220-240 , 1	290x870x230	10.0	6.35	9.52
SRK25ZSA-W	2.5	3.4	220-240 , 1	290x870x230	10.0	6.35	9.52
SRK35ZSA-W	3.5	4.5	220-240 , 1	290x870x230	10.0	6.35	9.52
SRK50ZSA-W	5.0	5.8	220-240 , 1	290x870x230	10.0	6.35	12.70


INDOOR UNITS - WALL MOUNTED - AVANTI PLUS® SERIES

ITEM NO.	CAPACITY (kW)		POWER SUPPLY (V , Ph)	DIMENSIONS (mm)	WEIGHT (kg)	CONNECTION (mm)	
	COOLING	HEATING				LIQUID	GAS
SRK20ZSXA-W	2.0	3.0	220-240 , 1	305x920x220	13.0	6.35	9.52
SRK25ZSXA-W	2.5	3.4	220-240 , 1	305x920x220	13.0	6.35	9.52
SRK35ZSXA-W	3.5	4.5	220-240 , 1	305x920x220	13.0	6.35	9.52
SRK50ZSXA-W	5.0	5.8	220-240 , 1	305x920x220	13.0	6.35	12.70
SRK60ZSXA-W	6.0	6.8	220-240 , 1	305x920x220	13.0	6.35	12.70


INDOOR UNITS - BULKHEAD - SRR-ZS-W SERIES

ITEM NO.	CAPACITY (kW)		POWER SUPPLY (V , Ph)	DIMENSIONS (mm)	WEIGHT (kg)	CONNECTION (mm)	
	COOLING	HEATING				LIQUID	GAS
SRR25ZS-W	2.5	2.9	220-240 , 1	200x750x500	20.5	6.35	9.52
SRR35ZS-W	3.5	4.5	220-240 , 1	200x750x500	20.5	6.35	9.52
SRR50ZS-W	5.0	5.8	220-240 , 1	200x950x500	24.0	6.35	12.70
SRR60ZS-W	6.0	6.8	220-240 , 1	200x950x500	24.0	6.35	12.70


INDOOR UNITS - CASSETTE - FDTC SERIES

ITEM NO.	CAPACITY (kW)		POWER SUPPLY (V , Ph)	DIMENSION (mm)		WEIGHT (kg)		CONNECTIONS (mm)	
	COOLING	HEATING		INDOOR	PANEL	INDOOR	PANEL	LIQUID	GAS
FDTC25VH	2.5	3.4	220-240 , 1	248x570x570	10x620x620	14.0	3.5	6.35	12.70
FDTC35VH	3.5	4.5	220-240 , 1	248x570x570	10x620x620	14.0	3.5	6.35	12.70



BULKHEAD SYSTEM AIR CONDITIONERS

MITSUBISHI HEAVY INDUSTRIES SRR-ZS-W SERIES (REVERSE CYCLE)



AIR CONDITIONING



The SRR-ZS range of low profile bulkhead systems are designed to sit within the ceiling space and distribute air via discreet grilles. These compact units require no ducting and are perfect for renovated spaces and applications such as apartments where space is at a premium as they can be factored in to the finished design to provide a quiet, efficient and integrated heating and cooling solution.

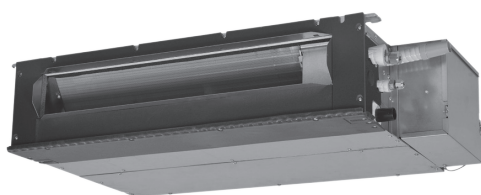
- Super slim, low profile design.
- Super quiet operation.
- Built-in drain pump.
- Eco mode for accurate selection of ideal operating mode.
- Optional Wi-Fi control.

ITEM NO.	CAPACITY (kW)		POWER SUPPLY (V , Ph)	DIMENSION (mm)		WEIGHT (kg)		CONNECTIONS (mm)	
	COOLING	HEATING		INDOOR	PANEL	INDOOR	PANEL	LIQUID	GAS
SRR25ZS-W-SET	2.5	3.4	240 , 1	200x750x500	595x780x290	20.5	35.0	6.35	9.52
SRR35ZS-W-SET	3.5	4.2	240 , 1	200x750x500	595x780x290	20.5	35.0	6.35	9.52

MITSUBISHI HEAVY INDUSTRIES SRR-ZM-S SERIES (REVERSE CYCLE)



AIR CONDITIONING



The SRR-ZM series of bulkhead systems are designed to sit entirely within the ceiling space and distribute air via grilles. Their slim, low-profile design, measuring only 200mm in height, makes them the perfect choice for apartments with limited ceiling space. As well as incorporating a range of convenient features and functions, the SRR-ZM series is extremely quiet, making it perfect for bedrooms.

- Slim, low profile design.
- Super quiet operation.
- Hi Power mode for rapid heating and cooling.
- Dry Operation for dehumidification.
- Optional Wi-Fi control.

ITEM NO.	CAPACITY (kW)		POWER SUPPLY (V , Ph)	DIMENSION (mm)		WEIGHT (kg)		CONNECTIONS (mm)	
	COOLING	HEATING		INDOOR	PANEL	INDOOR	PANEL	LIQUID	GAS
SRR25ZMXA-SET	2.5	3.4	240 , 1	200x750x500	595x780x290	20.5	35.0	6.35	9.52
SRR35ZMXA-SET	3.5	4.2	240 , 1	200x750x500	595x780x290	20.5	35.0	6.35	9.52

DUCTED SYSTEM AIR CONDITIONERS

GREE DUCTED SYSTEM (REVERSE CYCLE)



Compact and powerful, Gree ducted system air conditioners offer discreet heating and cooling for the entire home or work place. By adding zone controls, it also offers a higher level of control compared to traditional air conditioning units, which means a greater level of comfort and increased energy efficiency. This arrangement provides immense flexibility, in terms of both the distribution of conditioned air and the type of grille or diffuser that best complements the room's styling. Furthermore, each unit is backed by Gree's industry leading 6 year warranty in both residential and commercial applications.

- Greater energy savings thanks to Gree's G10 inverter technology.
- Wide voltage range operation.
- Condensate pump and safety float switch.
- Adjustable external static pressure.
- Non polarity communication wire.
- Optional gate card function and ModBus integration.

ITEM NO.	CAPACITY (kW)		POWER SUPPLY (V , Ph)	DIMENSION (mm)		WEIGHT (kg)		CONNECTIONS (mm)	
	COOLING	HEATING		INDOOR	PANEL	INDOOR	PANEL	LIQUID	GAS
GUD50PhS/B-S	5.3	5.8	220-240 , 1	1000x450x200	964x340x698	26.0	47.0	6.35	12.70
GUD71PhS/B-S	7.1	8.0	220-240 , 1	900x655x260	964x340x698	30.0	53.0	9.52	15.88
GUD100PhS/B-S	9.5	12.0	220-240 , 1	1000x700x300	940x460x820	41.0	83.0	9.52	15.88
GUD125PhS/B-S	12.5	13.5	220-240 , 1	1400x700x300	940x460x820	57.0	92.0	9.52	15.88
GUD140PhS/B-S	13.8	16.0	220-240 , 1	1400x700x300	900x340x1350	57.0	106.0	9.52	15.88
GUD160PhS/B-S	16.0	18.0	220-240 , 1	1150x720x350	940x320x1430	57.0	117.0	9.52	15.88
AC5720	20.0	22.4	380-415 , 3	440x1690x870	1615x940x460	110.0	155.0	9.52	19.05
AC5724	24.0	26.0	380-415 , 3	440x1690x870	1615x940x460	113.0	175.0	9.52	22.22

COMPLEMENT YOUR GREE DUCTED SYSTEM AIR CONDITIONER WITH A GREE ZONE CONTROLLER

- 4.3" TOUCHSCREEN CONTROL MONITOR
- SET DIFFERENT TEMPERATURES IN DIFFERENT ROOMS
- CONTROLS UP TO 8 ZONES/ROOMS AT THE SAME TIME
- WIRELESS TEMPERATURE SENSORS
- EASY INSTALLATION
- APP AVAILABLE FOR BOTH APPLE AND ANDROID DEVICES

(FULL SPECIFICATIONS, PAGE 20)



DUCTED SYSTEM AIR CONDITIONERS (CONT'D)

MITSUBISHI HEAVY INDUSTRIES FDU SERIES (REVERSE CYCLE)



AIR CONDITIONING



Mitsubishi Heavy Industries' new FDU series of slimline ducted systems are a quiet and discreet solution for multiple rooms. Coming in a range of capacities ranging from 7.1kW up to 14kW and incorporating a range of convenient features and functions, the FDU series is the perfect heating and cooling solution for any size Aussie home.

- Increased energy efficiency thanks to an improved heat exchanger and DC fan motor.
- Slim, low profile design, only 280mm in height.
- Quiet operation, including a market leading low of 25 db(A) on selected units.
- Balanced airflow and adjustable static pressure during installation.

ITEM NO.	CAPACITY (kW)		POWER SUPPLY (V, Ph)	DIMENSION (mm)		WEIGHT (kg)		CONNECTIONS (mm)	
	COOLING	HEATING		INDOOR	OUTDOOR	INDOOR	OUTDOOR	LIQUID	GAS
FDU71AVNXAVH	7.1	8.0	240 , 1	280x950x635	750x880x340	34.0	61.0	9.52	15.88
FDU100VNP1VH	10.0	11.2	240 , 1	280x1370x740	845x970x370	54.0	70.0	9.52	15.88
FDU100AVNVF2	10.0	11.2	240 , 1	280x1370x740	845x970x370	52.0	82.0	9.52	15.88
FDU125AVNXVH	12.5	14.0	240 , 1	280x1370x740	1300x970x370	54.0	106.0	9.52	15.88
FDU140AVNXVH	14.0	16.0	240 , 1	280x1370x740	1300x970x370	54.0	106.0	9.52	15.88
FDU125VSXVH	12.5	14.0	380-415 , 3	398x1150x650	1300x970x370	52.0	105.0	9.52	15.88
FDU140AVSXVH	14.0	16.0	380-415 , 3	398x1150x650	1300x970x370	52.0	105.0	9.52	15.88

DUCTED SYSTEM AIR CONDITIONERS (CONT'D)

MITSUBISHI HEAVY INDUSTRIES FDU A SERIES (REVERSE CYCLE)



AIR CONDITIONING



Mitsubishi Heavy Industries' FDU A series of reverse cycle, ducted systems are quiet, compact and come in a variety of capacities, ranging from 7.1kW to 20kW. The FDU A series comes in both single and three phase options and offer up to 100m pipe run making them versatile and flexible. Incorporating a wide range of functions and features such as Automatic Mode which automatically selects cooling or heating mode based on the room's conditions, Hi Power Mode which provides an extra boost of power to help you reach your set temperature quickly and Silent Mode which reduces operation noise even further, the FDU A series is the perfect ducted air conditioning solution for any commercial application.

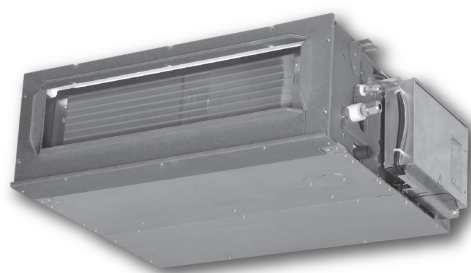
- External Static Pressure control
- Self-diagnostics function
- Weekly / sleep timer
- 600mm built-in drain pump

ITEM NO.	CAPACITY (kW)		POWER SUPPLY (V, Ph)	DIMENSION (mm)		WEIGHT (kg)		CONNECTIONS (mm)	
	COOLING	HEATING		INDOOR	OUTDOOR	INDOOR	OUTDOOR	LIQUID	GAS
FDUA100VNP1VF2	10.0	11.2	240, 1	398x1150x650	845x970x370	52.0	70.0	9.52	15.88
FDUA100AVNVF2	10.0	11.2	240, 1	398x1150x650	845x970x370	52.0	81.0	9.52	15.88
FDUA125AVNXVF	12.5	14.0	240, 1	398x1150x650	1300x970x370	52.0	105.0	9.52	15.88
FDUA140AVNXVF	14.0	16.0	240, 1	398x1150x650	1300x970x370	52.0	105.0	9.52	15.88
FDUA125VSXVF	12.5	14.0	380-415, 3	398x1150x650	1300x970x370	52.0	105.0	9.52	12.70
FDUA140VSXVF	14.0	16.0	380-415, 3	398x1150x650	1300x970x370	52.0	105.0	9.52	12.70
FDUA160AVSAVF	16.0	18.0	380-415, 3	398x1150x650	1505x970x370	52.0	143.0	12.7	22.22
FDUA200AVSAVG	20.0	22.4	380-415, 3	379x1600x893	1505x970x370	89.0	143.0	12.7	22.22

MITSUBISHI HEAVY INDUSTRIES FDUM SERIES (REVERSE CYCLE)



AIR CONDITIONING



Mitsubishi Heavy Industries' FDUM series of medium static, reverse cycle, ducted systems are quiet, compact and come in both single and three phase options as well as a variety of capacities, ranging from 5.0kW to 14kW. Incorporating a range of convenient functions and features such as Automatic Mode which automatically selects cooling or heating mode based on the room's conditions, Hi Power Mode which provides an extra boost of power to help you reach set temperature quickly and Silent Mode which reduces operation noise even further, the FDUM series is the perfect ducted air conditioning solution for any commercial application. All FDUM ducted systems also come with a 600mm built-in drain pump allowing greater flexibility with installation and easy maintenance.

- Automatic External Static Pressure control
- Weekly / Sleep timer
- Self-diagnostics function
- 600mm built-in drain pump

ITEM NO.	CAPACITY (kW)		POWER SUPPLY (V, Ph)	DIMENSIONS (mm)		WEIGHT (kg)		CONNECTIONS (mm)	
	COOLING	HEATING		INDOOR	PANEL	INDOOR	PANEL	LIQUID	GAS
FDUM50ZMXAVH	5.0	5.4	240, 1	280x750x635	640x800x290	29.0	45.0	6.35	12.70
FDUM60ZMXAVH	5.6	6.7	240, 1	280x950x635	640x800x290	34.0	45.0	6.35	12.70

CONTROL SYSTEMS

GREE ZONE CONTROL SYSTEM

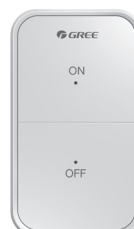


The Gree Zone Control System serves to satisfy different heating or cooling requirements of multiple zones (no more than 8) by means of just one U-Match ducted air conditioner, enabling independent control for each zone.

There is no need for wiring to each zone thanks to wireless radio frequency technology, allowing for cost-effective retrofitting.

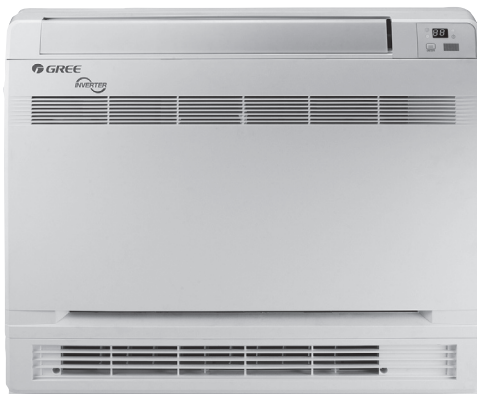
By adding a Gree Zone Control System to your ducted air conditioner you increase the unit's flexibility and its operational efficiency. The zone control system allows you to set different temperatures in different zones creating a more comfortable personal environment. The Gree Zone Control System also allows you to close off rooms not being used, thus saving energy.

MODEL		NAME	STANDARD KIT	POWER SUPPLY	WxHxD (mm)
Zone Control System LE60-13 / GH	Z4K252AJ	Zone Control Interface	1	220~240V 50Hz	196x151x39
	XE70-13 / E	Touch Screen Controller	1	RS485	127x87.2x23.6
	LE60-13 / C1	RF Remote Sensor	4	CR2450 Battery	52.5x90.5x17.8
Options	XE70-13 / E	Touch Screen Controller	1	RS485	127x87.2x23.6
	LE60-13 / C1	RF Remote Sensor	4	CR2450 Battery	52.5x90.5x17.8
	ME31-00 / C13	G-Cloud Wi-Fi Controller	1	RS485	93x50x20
Dampers	Supplied by the installer		Max 8	24VDC (150mA)	Ø150mm~Ø300mm



FLOOR STANDING SYSTEM AIR CONDITIONERS

GREE FLOOR STANDING SYSTEM (REVERSE CYCLE)



Attractive, yet discreet, Gree floor standing system air conditioners offer an alternative option for heating and cooling where room design is non-traditional or wall space may be limited. Delivering all the benefits of a standard split system air conditioner, these units can even be recessed into wall space and act as an ideal replacement for a home fireplace. Furthermore, all units are backed by Gree's industry leading 6 year warranty in both residential and commercial applications.

- Sine-Wave DC Inverter technology allows a room to reach the required temperature more rapidly than fixed speed units, leading to power savings of up to 30%.
- Gree Humanised Sleep mode gently raises or lowers the temperature automatically to maintain a comfortable room temperature and save energy.
- Built in, independent dehumidification system.
- Wi-Fi control available as standard.

ITEM NO.	CAPACITY (kW)		POWER SUPPLY (V, Ph)	DIMENSIONS (mm)		WEIGHT (kg)		CONNECTIONS (mm)	
	COOLING	HEATING		INDOOR	OUTDOOR	INDOOR	OUTDOOR	LIQUID	GAS
AC7413	5.2	5.3	220-240 , 1	600x700x215	700x995x396	15.5	46.0	6.35	12.70

MITSUBISHI HEAVY INDUSTRIES SRF-ZMXA-S SERIES (REVERSE CYCLE)



AIR CONDITIONING



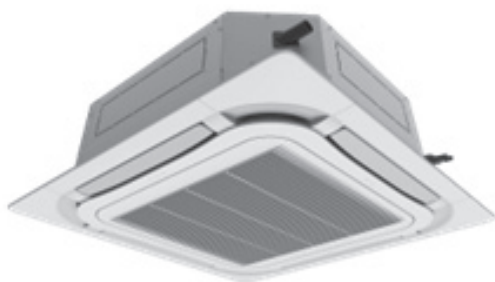
Discreet and versatile, the SRF-ZMXA range is perfect for rooms where wall space is limited but you still want the benefit of a well-engineered air conditioner to maintain a comfortable indoor climate. With the ability to select air outlet and louvre position you are in complete control of your air flow direction ensuring that every centimetre of your room is kept at the optimum temperature. Featuring a range of convenient functions such as Hi Power, for rapid cooling and heating, and dry operation for hot and humid spaces, this series is the ultimate option for keeping small, limited spaces comfortable in all seasons.

- Air Outlet selection for ultimate airflow control.
- Clean air with Allergen Clear Filter.
- Hi Power mode for rapid heating and cooling.
- Optional Wi-Fi control.

ITEM NO.	CAPACITY (kW)		POWER SUPPLY (V, Ph)	DIMENSIONS (mm)		WEIGHT (kg)		CONNECTIONS (mm)	
	COOLING	HEATING		INDOOR	OUTDOOR	INDOOR	OUTDOOR	LIQUID	GAS
SRF25ZMXA-SET	2.5	3.4	240 , 1	600x860x238	595x780x290	18.0	38.0	6.35	9.52
SRF35ZMXA-SET	3.5	4.5	240 , 1	600x860x238	595x780x290	19.0	38.0	6.35	9.52
SRF50ZMXA-SET	5.0	6.0	240 , 1	600x860x238	640x800x290	19.0	45.0	6.35	12.70

CEILING CASSETTE SYSTEM AIR CONDITIONERS

GREE CEILING CASSETTE SYSTEM (REVERSE CYCLE)



Gree's Ceiling Cassette System provides the ideal solution for acclimatising commercial spaces, conveniently disappearing above the surface of any ceiling. Each Cassette System is powered by Gree's energy efficient G10 inverter and variable speed compressor, saving energy, reducing noise and keeping room temperatures steady; and is backed by Gree's industry leading 6 year warranty in both residential and commercial applications.

- Subtle appearance fits a variety of spaces.
- Eight way air discharge delivers even climate control across the room.
- Multi speed fan for ultimate flexibility.
- Swing louver ensures consistent spread and avoids cold or hot pockets.
- Cleanable air filter.

ITEM NO.	CAPACITY (kW)		POWER SUPPLY	DIMENSION (mm)			WEIGHT (kg)			CONNECTIONS (mm)	
	COOLING	HEATING		INDOOR	PANEL	OUTDOOR	INDOOR	PANEL	OUTDOOR	LIQUID	GAS
GUD50T/B-S	5.3	5.8	230 , 1	240x840x840	950x950x52	964x340x698	29.0	6.0	47.0	6.35	12.70
GUD71T/B-S	7.1	8.0	230 , 1	240x840x840	950x950x52	964x340x698	29.0	6.0	53.0	9.52	15.88
GUD100T/B-S	10.1	12.0	230 , 1	290x840x840	950x950x52	940x460x820	33.0	6.0	83.0	9.52	15.88
GUD125T/B-S	12.5	13.5	230 , 1	290x840x840	950x950x52	940x460x820	33.0	6.0	91.0	9.52	15.88
GUD140T/B-S	13.6	16.0	230 , 1	290x840x840	950x950x52	900x340x1350	36.0	6.0	106.0	9.52	15.88

MITSUBISHI HEAVY INDUSTRIES FDTC SERIES (REVERSE CYCLE)



AIR CONDITIONING



At only 270mm in height and weighing just 16.5kg, the FDTC series offers one of the most compact ceiling cassette designs on the market. Combined with the built-in 600mm drain pump, this allows for a convenient and flexible installation. The Clean Air Function, which traps and removes air borne dust and allergens, and the ability to set the direction of each individual louvre provides users with a personalised experience and healthy indoor air quality.

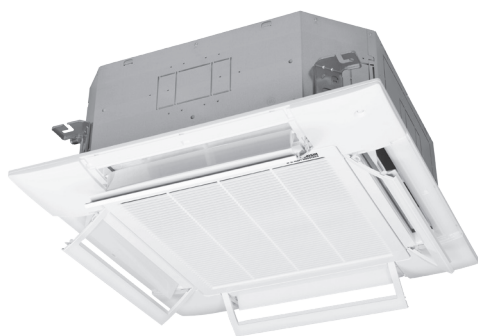
- Compact design.
- Individual louvre control.
- Clean Air technology.
- Automatic operation mode control.
- Sleep timer.
- 600mm built-in drain pump.

ITEM NO.	CAPACITY (kW)		POWER SUPPLY	DIMENSION (mm)			WEIGHT (kg)			CONNECTIONS (mm)	
	COOLING	HEATING		INDOOR	PANEL	OUTDOOR	INDOOR	PANEL	OUTDOOR	LIQUID	GAS
FDTC25ZSAVH1	2.5	3.4	240 , 1	248x570x570	10x620x620	540x780x290	14.0	2.0	34.5	6.35	12.70
FDTC35ZSAVH1	3.5	4.3	240 , 1	248x570x570	10x620x620	540x780x290	14.0	2.0	34.5	6.35	12.70

ITEM NO.	CAPACITY (kW)		POWER SUPPLY	DIMENSION (mm)			WEIGHT (kg)			CONNECTIONS (mm)	
	COOLING	HEATING		INDOOR	PANEL	OUTDOOR	INDOOR	PANEL	OUTDOOR	LIQUID	GAS
FDTC50ZMXAVH	5.0	5.4	240 , 1	248x570x570	10x620x620	640x800x290	15.0	3.5	45.0	6.35	12.70
FDTC60ZMXAVH	5.6	6.7	240 , 1	248x570x570	10x620x620	640x800x290	15.0	3.5	45.0	6.35	12.70

CEILING CASSETTE SYSTEM AIR CONDITIONERS (CONT'D)
MITSUBISHI HEAVY INDUSTRIES FDT SERIES (REVERSE CYCLE)


AIR CONDITIONING



FDT ceiling cassettes are available in single or three phase options with a range of capacities from 5.6kW to 14.0kW. With new Draught Control Technology and optional new Motion Sensor feature, the FDT series provides comfortable air flow that doesn't create warm or cold draughts and detects the amount of human activity in the room, automatically switching to energy-saving mode at times of low activity. The 800mm built-in drain pump and up to 100m pipe run makes this range suitable for a variety of residential and commercial spaces.

- Draught Control Technology.
- Optional Motion Sensor for increased energy saving.
- Clean Air function.
- Sleep timer.
- 800mm built-in drain pump.

ITEM NO.	CAPACITY (kW)		POWER SUPPLY (V , Ph)	DIMENSION (mm)			WEIGHT (kg)			CONNECTIONS (mm)	
	COOL	HEAT		INDOOR	PANEL	OUTDOOR	INDOOR	PANEL	OUTDOOR	LIQUID	GAS
FDT60ZMXAVG	5.6	6.7	240 , 1	246x840x840	35x950x950	640x800x290	24.0	5.5	45.0	6.35	12.70
FDT71AVNXAVG	7.1	8.0	240 , 1	246x840x840	35x950x950	750x880x340	24.0	5.5	60.0	9.52	15.88
FDT100VNP1VG	10.0	11.2	240 , 1	298x840x840	35x950x950	845x970x370	27.0	5.5	70.0	9.52	15.88
FDT100AVNVG	10.0	11.2	240 , 1	298x840x840	35x950x950	845x970x370	27.0	5.5	81.0	9.52	15.88
FDT125AVNXVG	12.5	14.0	240 , 1	298x840x840	35x950x950	1300x970x370	27.0	5.5	105.0	9.52	15.88
FDT140AVNXVG	14.0	16.0	240 , 1	298x840x840	35x950x950	1300x970x370	27.0	5.5	105.0	9.52	15.88
FDT125VSXVG	12.5	14.0	380-415 , 3	298x840x840	35x950x950	1300x970x370	27.0	5.5	105.0	9.52	15.88
FDT140AVSXVG	14.0	16.0	380-415 , 3	298x840x840	35x950x950	1300x970x370	27.0	5.5	105.0	9.52	15.88

CEILING SUSPENDED SYSTEM AIR CONDITIONERS

GREE FLOOR/CEILING UNITS



- Gree Floor Ceiling are designed to be suspended from a ceiling or mounted low on a wall. Gree Floor Ceiling units provide a flexible alternative to hi-walls, ducted and cassette units.
- With their sleek streamline design, they are perfect for restaurants, stores, hallways and other applications where wall or ceiling space is limited.
- The unit has automatic louvre control between cooling and heating for better airflow and the louvre closes completely when switched off.
- Powerful airflow, auto restart and auto changeover coupled with the ceiling mount position make these units an excellent choice for server and electrical rooms.

FLEXIBLE INSTALLATION

The floor ceiling type air conditioner can be installed either against a wall at low level or hung from under a ceiling.

ITEM NO.	CAPACITY (kW)		POWER SUPPLY (V, Ph)	DIMENSIONS (mm)		WEIGHT (kg)		CONNECTIONS (mm)	
	COOLING	HEATING		INDOOR	OUTDOOR	INDOOR	OUTDOOR	LIQUID	GAS
GUD50ZD/B-S	5.3	5.8	240 , 1	870x665x235	892x340x698	26	47	6.35	12.7
GUD71ZD/B-S	7.1	8.0	240 , 1	1200x665x235	892x340x698	31	53	9.52	15.88
GUD100ZD/B-S	10.1	12.0	240 , 1	1200x665x235	940x460x820	33	83	9.52	15.88
GUD125ZD/B-S	12.0	14.0	240 , 1	1570x665x235	940x460x820	40	91	9.52	15.88
GUD140ZD/B-S	13.2	16.0	240 , 1	1570x665x235	900x340x1350	42	95	9.52	15.88

CEILING SUSPENDED SYSTEM AIR CONDITIONERS (CONT'D)
MITSUBISHI HEAVY INDUSTRIES FDE SERIES (REVERSE CYCLE)


AIR CONDITIONING



Mitsubishi Heavy Industries' ceiling suspended units have a compact design which are only 250mm in height and include a new and improved flap control technology that allows the user to select from six flap positions for a perfect airflow angle. The system is operated conveniently from a wired control panel. With a wide capacity range of 7.1 – 14kW and availability in single or three phase models, these units are ideal for use in cafes, retail shops and smaller offices. They offer improved installation workability with multiple refrigerant piping layouts, making this a flexible option for more complex designs.

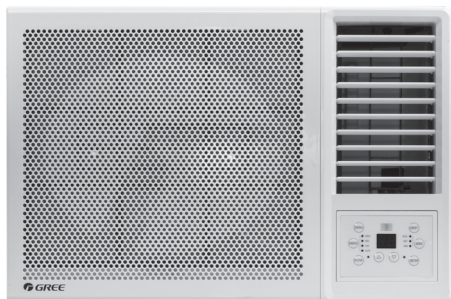
- Flexible air direction control.
- Clean air function.
- Hi Power mode for rapid cooling/heating (with RC-EX3 control).
- Home leave operation for energy saving (with RC-EX3 control).

ITEM NO.	CAPACITY (kW)		POWER SUPPLY (V, Ph)	DIMENSIONS (mm)		WEIGHT (kg)		CONNECTIONS (mm)	
	COOL-ING	HEAT-ING		INDOOR	OUTDOOR	INDOOR	OUTDOOR	LIQUID	GAS
FDE71AVNXAVH	7.1	8.0	240 , 1	210x1320x690	750x880x340	33.0	61.0	9.52	15.88
FDE100AVNVH	10.0	11.2	240 , 1	250x1620x690	845x970x370	43.0	82.0	9.52	15.88
FDE100VNPIVH	10.0	11.2	240 , 1	250x1620x690	845x970x370	43.0	70.0	9.52	15.88
FDE125AVNXVH	12.5	14.0	240 , 1	250x1620x690	1300x970x370	43.0	106.0	9.52	15.88
FDE140AVNXVH	14.0	16.0	240 , 1	250x1620x690	1300x970x370	43.0	106.0	9.52	15.88
FDE125VSXVH	12.5	14.0	380-415 , 3	250x1620x690	1300x970x370	43.0	105.0	9.52	15.88
FDE140AVSXVH	14.0	16.0	380-415 , 3	250x1620x690	1300x970x370	43.0	105.0	9.52	15.88



WINDOW UNIT AIR CONDITIONERS

GREE AOKI (REVERSE CYCLE)



Gree has cleverly designed this compact sleek Aoky window unit air conditioner with R32 eco-friendly refrigerant. Reverse cycle for both heating and cooling, the Aoky range is ideal for apartments, small offices, garages and pre-fab buildings. Furthermore, not only does the range have a number of great features as standard, Aoky is also backed by a 6 year warranty for residential applications.

- 3-Speed Fan, with auto mode, automatically adjusts as the room temperature changes.
- Fresh air ventilation slider to ventilate to expel smoke and odours from the room.
- Hydrophilic blue fin coils, as well as a galvanised and painted slide out chassis protects against corrosion.
- Check filter indicator reminds users to clean the filter for more efficient operation.
- Swing function rotates louvres automatically.
- In the unlikely event of a malfunction, self-diagnostics will display the malfunction code aiding a speedy repair.
- Sleep function changes the set point temperature after one and then two hours. This follows a more natural sleep pattern.

REVERSE CYCLE

ITEM NO.	CAPACITY (kW)		POWER SUPPLY (V, Ph)	DIMENSIONS (mm)	WEIGHT (kg)
	COOLING	HEATING			
AC5055	2.2	1.9	240 , 1	375x560x670	36.0
AC5056	2.7	2.5	240 , 1	375x560x670	44.0
AC5057	3.9	3.6	240 , 1	428x660x700	57.0
AC5058	5.3	4.8	240 , 1	428x660x700	68.0
AC5059	6.0	5.5	240 , 1	428x660x700	68.0

COOLING ONLY

ITEM NO.	CAPACITY (kW)	POWER SUPPLY	DIMENSIONS	WEIGHT
	COOLING	(V, Ph)	(mm)	(kg)
AC5078	1.6	240 , 1	350x450x580	29.0
AC5080	2.2	240 , 1	375x560x669	36.0
AC5082	2.7	240 , 1	375x560x670	40.0
AC5084	3.9	240 , 1	428x660x700	51.0
AC5086	5.6	240 , 1	428x660x700	64.0
AC5088	6	240 , 1	428x660x700	65.0

VRF SYSTEMS

MITSUBISHI HEAVY INDUSTRIES HIGH PERFORMANCE 1:1 KX SYSTEMS - WALL MOUNTED (REVERSE CYCLE)



AIR CONDITIONING



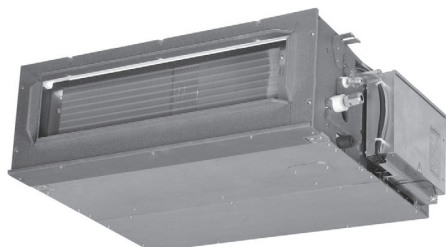
Mitsubishi Heavy Industries KX High Performance Systems utilise a range of KX VRF indoor and outdoor units in a one-to-one application to deliver an excellent combination of performance, value and simplicity.

- Developed by award winning Italian designers TENSA, the FDK series features a sleek and stylish design that allows it to effortlessly integrate into any residential or commercial interior.
- CFD (computational fluid dynamics), used by jet engine manufacturers, has been applied to the fan blade design in our split systems, allowing them to deliver the most powerful and even air distribution whilst remaining economical to run.
- Louvre control allows louvres to swing between the maximum upper and lower louvre positions or to be set at a fixed position.
- Blue fin coated coils ensure long life and enhanced durability against the elements.
- DC inverter compressors deliver high efficiency cooling COPs up to 4.0.

ITEM NO.	CAPACITY (kW)		POWER SUPPLY	DIMENSIONS (mm)		WEIGHT (kg)		CONNECTIONS (mm)		CONTROLLER
	COOLING	HEATING	(V, Ph)	INDOOR	OUTDOOR	INDOOR	OUTDOOR	LIQUID	GAS	MODEL
FDC112NFDK90Z	9.0	10.0	220-240, 1	339x1197x262	845x970x370	17.0	85.0	9.52	15.88	RC-EX3A

VRF SYSTEMS (CONT'D)
**mitsubishi heavy industries high performance 1:1 KX SYSTEMS
 - DUCTED (REVERSE CYCLE)**


AIR CONDITIONING



Mitsubishi Heavy Industries KX High Performance Systems utilise a range of KX VRF indoor and outdoor units in a one-to-one application to deliver an excellent combination of performance, value and simplicity.

- Through using the manually set external static pressure during installation, the indoor unit will control the fan-speed to ensure rated air flow volume at each fan speed setting. Using the set air flow rate and pressure loss of the ducts connected you can set the required E.S.P. using the wired remote control.
- Transparent window allows for the drain pan to be checked for dirt without removing it from the unit.
- Blue fin coated coils ensure long life and enhanced durability against the elements.
- DC inverter compressors deliver high efficiency cooling COPs up to 4.0.

ITEM NO.	CAPACITY (kW)		POWER SUPPLY (V, Ph)	DIMENSIONS (mm)		WEIGHT (kg)		CONNECTIONS (mm)		STATIC PRESSURE (Pa)	CONTROLLER
	COOL-ING	HEAT-ING		INDOOR	OUTDOOR	IN-DOOR	OUT-DOOR	LIQUID	GAS		
FDC112NFDU90E	9.0	10.0	220-240 , 1	280x950x635	845x970x370	34.0	85.0	9.52	15.88	200	RC-EX3A
FDC112NFDUM90E	9.0	10.0	220-240 , 1	280x950x635	845x970x370	34.0	85.0	9.52	15.88	100	RC-EX3A
FDC112NFDU112E	11.2	12.5	220-240 , 1	280x1370x740	845x970x370	54.0	85.0	9.52	15.88	200	RC-EX3A
FDC112NFDUM112E	11.2	12.5	220-240 , 1	280x1370x740	845x970x370	54.0	85.0	9.52	15.88	100	RC-EX3A
FDC140NFDU140E	14.0	16.0	220-240 , 1	280x1370x740	845x970x370	54.0	85.0	9.52	15.88	200	RC-EX3A
FDC140NFDUM140E	14.0	16.0	220-240 , 1	280x1370x740	845x970x370	54.0	85.0	9.52	15.88	100	RC-EX3A
FDC140SFDU140E	14.0	16.0	380-415 , 3	280x1370x740	845x970x370	54.0	87.0	9.52	15.88	200	RC-EX3A
FDC140SFDUM140E	14.0	16.0	380-415 , 3	280x1370x740	845x970x370	54.0	87.0	9.52	15.88	100	RC-EX3A
FDC140NFDU160E	16.0	18.0	220-240 , 1	280x1370x740	845x970x370	54.0	85.0	9.52	15.88	200	RC-EX3A
FDC140NFDUM160E	16.0	18.0	220-240 , 1	280x1370x740	845x970x370	54.0	85.0	9.52	15.88	100	RC-EX3A
FDC140SFDU160E	16.0	18.0	380-415 , 3	280x1370x740	845x970x370	54.0	87.0	9.52	15.88	200	RC-EX3A
FDC140SFDUM160E	16.0	18.0	380-415 , 3	280x1370x740	845x970x370	54.0	87.0	9.52	15.88	100	RC-EX3A
FDC155NFDU160E	16.0	18.0	220-240 , 1	280x1370x740	845x970x370	54.0	85.0	9.52	15.88	200	RC-EX3A
FDC155NFDUM160E	16.0	18.0	220-240 , 1	280x1370x740	845x970x370	54.0	85.0	9.52	15.88	100	RC-EX3A
FDC155SFDU160E	16.0	18.0	380-415 , 3	280x1370x740	845x970x370	54.0	87.0	9.52	15.88	200	RC-EX3A
FDC155SFDUM160E	16.0	18.0	380-415 , 3	280x1370x740	845x970x370	54.0	87.0	9.52	15.88	100	RC-EX3A
FDC224EFDU224Z	22.4	25.0	380-415 , 3	379x1600x893	1675x1080x480	89.0	221.0	9.52	15.88	200	RC-EX3A
FDC224ZPFDU224Z	22.4	25.0	380-415 , 3	379x1600x893	1505x970x370	89.0	165.0	9.52	15.88	200	RC-EX3A
FDC280EFDU280Z	28.0	31.5	380-415 , 3	379x1600x893	1675x1080x480	89.0	221.0	9.52	15.88	200	RC-EX3A
FDC280ZEFDU280Z	28.0	31.5	380-415 , 3	379x1600x893	1690x1350x720	89.0	272.0	9.52	15.88	200	RC-EX3A
FDC280ZPFDU280Z	28.0	31.5	380-415 , 3	379x1600x893	1505x970x370	89.0	165.0	9.52	15.88	200	RC-EX3A

VRF SYSTEMS (CONT'D)

MITSUBISHI HEAVY INDUSTRIES HIGH PERFORMANCE 1:1 KX SYSTEMS - CEILING SUSPENDED (REVERSE CYCLE)



AIR CONDITIONING



Mitsubishi Heavy Industries KX High Performance Systems utilise a range of KX VRF indoor and outdoor units in a one-to-one application to deliver an excellent combination of performance, value and simplicity.

- Individual Louvre Control allows the louvres to be set in a number of fixed positions for effective air distribution.
- New slim design developed by reducing the number of fan motors, also resulting in weight reduction.
- Reduced operating noise achieved by decreasing air-flow volume, decreasing pressure by using one fan motor, optimizing casing and distributor shape.
- Blue fin coated coils ensure long life and enhanced durability against the elements.
- DC inverter compressors deliver high efficiency cooling COPs up to 4.0.

ITEM NO.	CAPACITY (kW)		POWER SUPPLY (V, Ph)	DIMENSIONS (mm)		WEIGHT (kg)		CONNECTIONS (mm)		CONTROLLER
	COOLING	HEATING		INDOOR	OUTDOOR	INDOOR	OUTDOOR	LIQUID	GAS	MODEL
FDC112NFDE112Z	11.2	12.5	220-240 , 1	250x1620x690	845x970x370	43.0	85.0	9.52	15.88	RC-EX3A
FDC140NFDE140Z	14.0	16.0	220-240 , 1	250x1620x690	845x970x370	43.0	85.0	9.52	15.88	RC-EX3A
FDC140SFDE140Z	14.0	16.0	380-415 , 3	250x1620x690	845x970x370	43.0	87.0	9.52	15.88	RC-EX3A
FDC155NFDE140Z	14.0	16.0	220-240 , 1	250x1620x690	845x970x370	43.0	85.0	9.52	15.88	RC-EX3A
FDC155SFDE140Z	14.0	16.0	380-415 , 3	250x1620x690	845x970x370	43.0	87.0	9.52	15.88	RC-EX3A

VRF SYSTEMS (CONT'D)

MITSUBISHI HEAVY INDUSTRIES HIGH PERFORMANCE 1:1 KX SYSTEMS - TWO WAY CASSETTE (REVERSE CYCLE)



AIR CONDITIONING



Mitsubishi Heavy Industries KX High Performance Systems utilise a range of KX VRF indoor and outdoor units in a one-to-one application to deliver an excellent combination of performance, value and simplicity.

- With the ability to individually control each louvre's position and with an improved outlet design, occupants can deliver powerful airflow in four different directions, allowing for even air distribution.
- Louvre swing system allows the louvre to swing within the range of upper and lower position selected with wired remote control.
- Drainage flow test can be done easily by use of the drainage spout; dirt condition of the bottom of a drain pan can be checked through transparent access hole without removing drain pan.
- Drain can be discharged upward by 750mm from the ceiling surface close to the indoor unit, allowing a piping layout with a high degree of freedom depending on the installation location.
- Blue fin coated coils ensure long life and enhanced durability against the elements.
- DC inverter compressors deliver high efficiency cooling COPs up to 4.0.

ITEM NO.	CAPACITY (kW)		POWER SUPPLY (V, Ph)	DIMENSIONS (mm)			WEIGHT (kg)			CONNECTIONS (mm)		CON-TROLLER MODEL
	COOL	HEAT		INDOOR	PANEL	OUTDOOR	INDOOR	PANEL	OUTDOOR	LIQUID	GAS	
FDC112NFDWTW90E	9.0	10.0	220-240, 1	325x1535x620	20x1835x680	845x970x370	35.0	13.0	85.0	9.52	15.88	RC-EX3A
FDC112NFDWTW112E	11.2	12.5	220-240, 1	325x1535x620	20x1835x680	845x970x370	35.0	13.0	85.0	9.52	15.88	RC-EX3A
FDC140NFDWTW140E	14.0	16.0	220-240, 1	325x1535x620	20x1835x680	845x970x370	35.0	13.0	85.0	9.52	15.88	RC-EX3A
FDC140SFDWTW140E	14.0	16.0	380-415, 3	325x1535x620	20x1835x680	845x970x370	35.0	13.0	87.0	9.52	15.88	RC-EX3A
FDC155NFDWTW140E	14.0	16.0	220-240, 1	325x1535x620	20x1835x680	845x970x370	35.0	13.0	85.0	9.52	15.88	RC-EX3A
FDC155SFDWTW140E	14.0	16.0	380-415, 3	325x1535x620	20x1835x680	845x970x370	35.0	13.0	87.0	9.52	15.88	RC-EX3A

VRF SYSTEMS (CONT'D)

MITSUBISHI HEAVY INDUSTRIES HIGH PERFORMANCE 1:1 KX SYSTEMS - FOUR WAY CASSETTE (REVERSE CYCLE)



AIR CONDITIONING



Mitsubishi Heavy Industries KX High Performance Systems utilise a range of KX VRF indoor and outdoor units in a one-to-one application to deliver an excellent combination of performance, value and simplicity.

- Draft Prevention Panel utilises 4 specially designed louvers to direct airflow horizontally along the ceiling, allowing it to evenly disperse. This eliminates uncomfortable and annoying draughts.
- CFD (computational fluid dynamics), used by jet engine manufacturers, has been applied to the fan blade design in our split systems, allowing them to deliver the most powerful and even air distribution whilst remaining economical to run.
- Newly designed turbo fan and fan guard delivers improved aerodynamic performance and achieve lower noise
- According to room conditions, four directions of airflow can be controlled individually by utilizing the louver control system
- Drain can be discharged upwards by 850mm from the ceiling surface, allowing a piping layout with a high degree of freedom
- Easily check the drain pan by simply removing the corner panel
- Blue fin coated coils ensure long life and enhanced durability against the elements
- DC inverter compressors deliver high efficiency cooling COPs up to 4.0DC inverter compressors deliver high efficiency cooling COPs up to 4.0.

ITEM NO.	CAPACITY (kW)		POWER SUPPLY (V, Ph)	DIMENSIONS (mm)			WEIGHT (kg)			CONNECTIONS (mm)		CON- TROLLER MODEL
	COOL	HEAT		INDOOR	PANEL	OUTDOOR	INDOOR	PANEL	OUTDOOR	LIQUID	GAS	
FDC112NFDT90Z	9.0	10.0	220-240 , 1	298x840x840	35x950x950	845x970x370	25.0	5.0	85.0	9.52	15.88	RC-EX3A
FDC112NFDT112Z	11.2	12.5	220-240 , 1	298x840x840	35x950x950	845x970x370	25.0	5.0	85.0	9.52	15.88	RC-EX3A
FDC140NFDT140Z	14.0	16.0	220-240 , 1	298x840x840	35x950x950	845x970x370	25.0	5.0	85.0	9.52	15.88	RC-EX3A
FDC140SFDT140Z	14.0	16.0	380-415 , 3	298x840x840	35x950x950	845x970x370	25.0	5.0	87.0	9.52	15.88	RC-EX3A
FDC155NFDT140Z	14.0	16.0	220-240 , 1	298x840x840	35x950x950	845x970x370	25.0	5.0	85.0	9.52	15.88	RC-EX3A
FDC155SFDT140Z	14.0	16.0	380-415 , 3	298x840x840	35x950x950	845x970x370	25.0	5.0	87.0	9.52	15.88	RC-EX3A
FDC155NFDT160Z	16.0	18.0	220-240 , 1	298x840x840	35x950x950	845x970x370	25.0	5.0	85.0	9.52	15.88	RC-EX3A
FDC155SFDT160Z	16.0	18.0	380-415 , 3	298x840x840	35x950x950	845x970x370	25.0	5.0	87.0	9.52	15.88	RC-EX3A

WATER CHILLERS

GREE A,B & D-SERIES WATER CHILLERS



Gree A and B-Series Inverter chillers and D-Series fixed speed chillers are suitable for a wide range of applications and thanks to their modular design also offer a very wide capacity range. With the additional advantage of being able to reverse cycle, they can be used for cooling in summer and heating in winter. Heating cycle means you can save energy that would otherwise be used by other less efficient heating sources such as electric heat which can use 3-4 times more energy for the same heat output.

These modular chillers can be widely used in various sized new or retrofitted buildings such as hotels, apartments, restaurants, offices, shopping malls, hospitals or any other building where reliable and efficient cooling or heating is required. As well as chilling water for air-conditioning; A, B and D series chillers can also be used to chill a glycol mix down to -5°C making them suitable for use in a myriad of other applications including cold-stores, food and dairy, breweries, wineries and various process cooling applications.

Key features

- Inverter technology on A & B series can quickly respond to load changes leading to decreased water temperature fluctuations better comfort. This also leads to improved energy usage.
- Compressor operation balance technology ensures that each compressor operates in turn. This reduces the number of stop/start cycles on an individual compressor to maximise their lifespan.
- Internal baffles ensure the water mixes thoroughly in the heat exchanger to achieve a higher rate of heat transfer and efficiency.
- The high efficiency and low noise fan motors and blades combined with the optimised air passage can greatly lower the operation noise of the unit.
- Gree's proprietary 'gold fin' hydrophobic coating offers greater resistance to corrosive elements, performing 20 times better under salt spray testing than standard fin coil coating.
- Gree Intelligent Management System allows users to remotely monitor multiple A & B-Series chillers, including turning units on/off, setting parameters and monitoring alarms.

ITEM NO.	SERIES	NOM CAPACITY (kW)		WATER FLOW (l/sec)	PRESS DROP (kPa)	QUANTITY		REFRIGERANT (R410A)		CIRCUIT BREAKER (AMPS)	DIMENSIONS (W x D x H (mm))	WEIGHT (kg)	CONN (mm)
		COOL	HEAT			COMPS	FANS	CIRCUITS	(kg/circ)				
*LSQWRF35VM/NAAM	A	32	36	1.5	75	1	2	1	7.8	32	1605x845x1340	417	32
*LSQWRF65VM/NAAM	A	65	70	3.1	60	2	2	2	7.8	63	1607x965x2200	720	50
*LSQWRF130VM/NAB-X	B	130	140	6.2	60	4	4	4	7.0	150	2190x2305x1980	1568	80
LSQWRF65M/NaD-M	D	60	65	2.9	15	2	2	2	6.1	63	2040x1000x2230	770	65
LSQWRF80M/NaD-M	D	71	80	3.5	20	2	2	2	7.4	80	2040x1000x2230	825	65
LSQWRF130M/NaD-M	D	120	130	5.7	30	4	4	4	6.1	125	2225x1000x2230	1365	80
*LSQWRF160M/NaD-M	D	147	160	7.0	40	4	4	4	7.4	160	2225x1000x2230	1475	80
LSQWRF249M/NaD-M	D	230	249	11.9	75	4	8	4	12.8	225	3980x2260x2450	3285	100

- Units marked (*) are stock items other models are indent so please check lead time with Beijer Ref.
- Water pumps are not included and should be selected to be suit the given application.

Nominal Conditions

Cooling: Ambient Temp 35°C DB, 12°C EWT / 7°C LWT

Heating: Ambient Temp 7°C DB, 40°C EWT / 45°C LWT

*Please contact Beijer Ref for ratings at other conditions.

GREE industrial screw chillers also available for both AC and process cooling applications.

Please contact Beijer Ref for details.



A-Series
2fan model



B-Series
4fan model



D-Series
2fan model



D-Series
4fan model



D-Series
8fan model

AIR CURTAINS
GREE FM SERIES AIR CURTAINS


Gree air curtains help sustain a healthy working environment whether cooling, heating or ambient conditions for a comfortable climate for customers and employees. An air curtain allows for open door trading in retail outlets offering uninterrupted access to the public. Easy to install and easy to maintain, air curtains offer a simple and cost effective solution to maintain an inviting climate in any working or retail space.

- Optimised cross flow fan with a high performance motor.
- Anti-corrosion protection thanks to a two sided electro galvanised metal case.
- Integrated electric components for easy maintenance.
- Microprocessor control with greater reliability and a long service life.
- High performance cross flow fan blade with 3D optimised streamlining.
- Remote controlled operation.

ITEM NO.	VELOCITY	POWER SUPPLY	DIMENSIONS	WEIGHT	SOUND POWER (dBA)	
	(m/s)	(V, Ph)	(mm)	(kg)	LOW	HIGH
AC7509	8	220-230 , 1	900x215x193	16.0	56	59.0
AC7501	8	220-230 , 1	1200x215x193	20.0	56	61.0

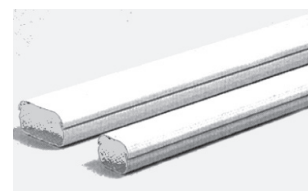
DUCTING

TOYO DUCTING

This attractive ivory coloured ducting is easy to install. The slim, square design of the duct and accessories has an aesthetic appearance which will enhance any installation. The duct is made of highly durable, weatherproof PVC resin. Suitable for use in the temperature range -20 to +60° C.

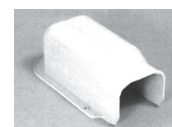


ITEM NO.	MODEL	DESCRIPTION	CARTON QTY
AC0201	TD-80	80mm Duct - 2m lengths	5
AC0204	TD-100	100mm Duct - 2m lengths	4
AC0202	TD-120	120mm Duct - 2m lengths	4

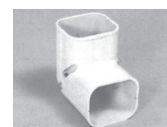


TOYO DUCT ACCESSORIES

ITEM NO.	MODEL	DESCRIPTION	CARTON QTY
AC0206	DC-80	80mm Cap	20
AC0205	DC-100	100mm Cap	16
AC0210	DC-120	120mm Cap	10
AC0209	DK-80	80mm Corner	20
AC0211	DK-100	100mm Corner	20
AC0213	DK-120	120mm Corner	6
AC0215	DLW-80	80mm 45° Elbow	20
AC0217	DL-80	80mm 90° Elbow	20
AC0216	DL-100	100mm 90° Elbow	12
AC0218	DL-120	120mm 90° Elbow	10
AC0220	DJ-80	80mm Joint	50
AC0219	DJ-100	100mm Joint	25
AC0221	DJ-120	120mm Joint	20
AC0223	DE-80	80mm End Socket	20
AC0224	DS-80	80mm Ceiling Cap	20
AC0222	DS-100	100mm Ceiling Cap	20
AC0226	DS-120	120mm Ceiling Cap	10
AC0212	DF-80S	80mm Flexible Joint	20
AC0214	DF-100	100mm Flexible Joint	8
AC0213	DF-120	120mm Flexible Joint	5
AC0222	DR-120	120mm Reducing Joint	10
AC0232	DT-80	80mm T-Joint	10
AC0225	DT-120	120mm T-Joint	5



Cap



Corner



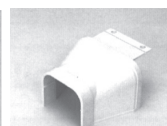
45° Elbow



90° Elbow



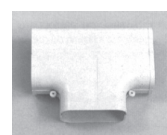
Joint



Reducing Joint



End Socket



T-Joint



Ceiling Cap

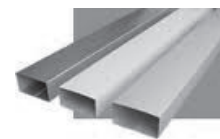


Flexible Joint

DUCTING (CONT'D)

COLORBOND TRUNKING

ITEM NO.	MODEL	DESCRIPTION
AC0753A-W	CC/BON	2.4m Trunking - Various Colour Available
AC0754	CC/GAL	2.4m Trunking - Galvanised



COLORBOND HAT-SECTION

ITEM NO.	MODEL	DESCRIPTION
AC1081	HS/CRM	Colorbond Hatsection 2.4m - Cream
AC1082	HS/PB	Colorbond Hatsection 2.4m - Paperbark
AC1084	HS/WHT	Colorbond Hatsection 2.4m - White



MOUNTING BRACKETS

FREDDOX



FREDDOX WALL MOUNTING BRACKETS SPLIT SYSTEM OUTDOOR UNIT

ITEM NO.	MATERIAL	DIMENSIONS (mm)			CAPACITY (kg)
		A	B	C	
L450K-2	Galvanised Steel with Ivory Powder Coat	350	450	335	120
L550K-2	Galvanised Steel with Ivory Powder Coat	450	550	390	150
L450STSTK-2	Stainless Steel SUS 304	350	450	335	120
L550STSTK-2	Stainless Steel SUS 304	450	550	390	150



FREDDOX WALL MOUNTING BRACKETS SPLIT SYSTEM OUTDOOR UNIT - ADJUSTABLE BAR

ITEM NO.	MATERIAL	DIMENSIONS (mm)				CAPACITY (kg)
		A	B	C	D	
L450ADJBARK-2	Galvanised Steel with Ivory Powder Coat	350	450	335	700	120
L550ADJBARK-2	Galvanised Steel with Ivory Powder Coat	450	550	390	1,000	150
L450ADJBARSTSTK-2	Stainless Steel SUS 304	350	450	335	700	120
L550ADJBARSTSTK-2	Stainless Steel SUS 304	450	550	390	850	150

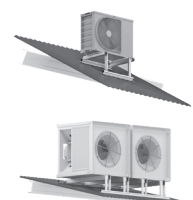


MONKEYTOE



MONKEYTOE ADJUSTABLE MOUNTING SYSTEM

ITEM NO.	MATERIAL	DESCRIPTION	CAPACITY (kg)
AC1500	CS004.06.04	Adjustable Mounting System 600 x 420	80
AC1502	CS004.12.09	Adjustable Mounting System 1200 x 850	150
AC1504	CS004.18.12	Adjustable Mounting System 1750 x 1150	300
AC1506	CS004H.19.12	Adjustable Mounting System 1850 x 1150	500

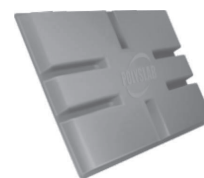


MOUNTING BASES

Polyslab is made from an extremely tough composite material with added UV protection. It eliminates the need for bulky, dirty and unsightly products. PolySlab provides a lighter, safer alternative to dangerously heavy precast concrete products including slabs and pavers.



ITEM NO.	MODEL	DESCRIPTION
PSA1	PSAC-SML	Polyslab 640mm x 340mm x 50mm High
PSA2	PSAC-MED	Polyslab 885mm x 465mm x 50mm High
PSA3	PSAC-LGE	Polyslab 1130mm x 655mm x 50mm High
AC6008	PSH-WS	Polyslab 690mm x 690mm x 50mm (For hot water cylinder)



EVO-CRETE - OUTDOOR UNIT MOUNTING BASES

EVO-CRETE is a reinforced Cellular Concrete which creates a dynamic cellular structure with fibre reinforcing to provide extreme strength and durability. The lightweight design reduces Occupational Health and Safety manual handling risks associated with heavy concrete and replaces inferior heavy and non-structural polystyrene fillers.

ITEM NO.	MODEL	DESCRIPTION
AC6020	EVO-CRETE	Evo-Crete Slab 900mm x 450mm x 50mm High
AC6025	ACB	Evo-Crete Blocks 450mm x 450mm x 50mm High



Evo-Crete Blocks



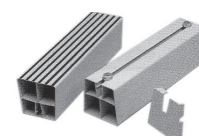
Evo-Crete Slab

TOYO OUTDOOR UNIT BASES

ITEM NO.	MODEL	DESCRIPTION	CARTON QTY
AC0503	HB-450	Rigid Resin Base, Ivory 450mm	30
AC0512	BBB-45	Quick Base, Ivory 450mm	20
AC0515	PQB45	Quick Base, Grey 450mm	
AC0522	PQB-100I	Quick Base, Ivory 1000mm	10



Rigid Resin Base



Quick Base

ASPEN RUBBER MOUNTING FEET

ITEM NO.	DESCRIPTION	DIMENSION (mm)			CAPACITY (kg)
		A	B	C	
AC9000	Vibration rubber mounts 4pc pkt.	110	50	75	400



CONDENSER CAGES

BIG MAN CONDENSER CAGES



ITEM NO.	DESCRIPTION
ACCC900	Protection Cage W1100 x H900 x D660 Flatpack
ACCC900BPLTE	Big Man Condenser Cage Back Plate ACCC900
ACCC900BSE	Big Man Condenser Cage Base ACCC901
ACCC1000	Protection Cage W1200 x H1000 x D660 Flatpack
ACCC1000BPLTE	Big Man Condenser Cage Back Plate ACCC1000
ACCC1000BSE	Big Man Condenser Cage Base ACCC1000
ACCC1200	Protection Cage W1200 x H1200 x D660 Flatpack
ACCC1200BPLTE	Big Man Condenser Cage Back Plate ACCC1200
ACCC1200BSE	Big Man Condenser Cage Base ACCC1200
ACCC1400	Protection Cage W1200 x H1400 x D660 Flatpack
ACCC1400BPLTE	Big Man Condenser Cage Back Plate ACCC1400
ACCC1400BSE	Big Man Condenser Cage Base ACCC1400
ACCC1600	Protection Cage W1200 x H1600 x D660 Flatpack
ACCC1600BPLTE	Big Man Condenser Cage Back Plate ACCC1600
ACCC1600BSE	Big Man Condenser Cage Base ACCC1600

COMPACT PUMPS

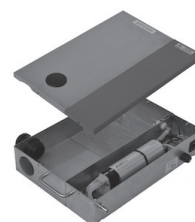
BLUE DIAMOND COMPACT PUMPS

BlueDiamond®
 condensate removal pumps



As an international supplier of condensate removal pumps and accessories, BlueDiamond ensures that the installer and end user is always at the forefront of their focus. Continued in-house product development and manufacturing allow BlueDiamond to not only keep up with demand but to develop a range of condensate removal pumps that resolves a list of common failings and weaknesses faced by engineers on a regular basis.

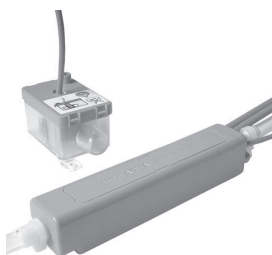
ITEM NO.	PRODUCT NAME	DESCRIPTION
BDX85-001	MicroBlue	<p>The MICROBLUE™ not only runs silently but can also be mounted in any orientation whilst operating both wet and dry continuously.</p> <ul style="list-style-type: none"> • Flow Rate: 5Ltr/hr max @ zero head • Discharge Head 5m max / Suction Lift 2m max • Noise Rating: 17dB(A) When primed with water. • Maximum Cooling Capacity: 3.5kw @ 1m Head
BDX87-504	MiniBlue	<p>The MINIBLUE® is not only whisper quiet but can also be mounted in any orientation while operating wet and dry continuously. Small enough to quickly fit into any installation.</p> <ul style="list-style-type: none"> • Flow Rate: 5Ltr/hr max @ zero head • Discharge Head 8m max / Suction Lift 5m max • Noise Rating: 21dB(A) When primed with water. • Maximum Cooling Capacity: 5kw @ 1m Head
BDX87-701	MaxiBlue	<p>Designed for high humidity environments, the MAXIBLUE® only senses when water is present. The pump can be mounted in any orientation and is exceptionally quiet with no vibration, making it ideal for where low noise levels are key.</p> <ul style="list-style-type: none"> • Flow Rate: 14Ltr/hr max @ zero head • Discharge Head 8m max / Suction Lift 8m max • Noise Rating: 21dB(A) When primed with water. • Maximum Cooling Capacity: 10kw @ 1m Head
BDX87-813	MegaBlue	<p>The MEGABLUE® uses the patented BlueDiamond rotary diaphragm technology. Whilst being exceptionally quiet, it is also able to pump up to six storeys high, making the MEGABLUE® ideal for installations where distance is required.</p> <ul style="list-style-type: none"> • Flow Rate: 50Ltr/hr max @ zero head • Discharge Head 20m max / Suction Lift 7m max • Noise Rating: 23dB(A) When primed with water. • Maximum Cooling Capacity: 10kw @ 1m Head
BDX87-837	ArctikBlue	<p>Designed for use in multideck and dairy cabinets, the ARCTIKBLUE® incorporates the ultra-reliable MEGABLUE® pump in a tough steel tray. The ARCTIKBLUE® is able to run dry or self-prime, meaning it can be sited above any pipe work and away from hazardous areas.</p> <ul style="list-style-type: none"> • Flow Rate: 11Ltr/hr max @ zero head • Discharge Head: 10m max • Continuously rated run • Noise Rating: 21dB(A) When primed with water. • Maximum Cooling Capacity: 7kw @ 1m Head



- All above condensate pumps require a 240V power supply.
- All models include alarm contacts.

COMPACT PUMPS

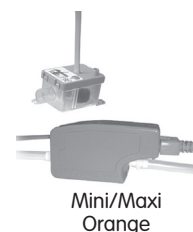
ASPEN COMPACT PUMPS



Aspen has built a reputation for designing reliable and quiet pumps that can be installed where space is very limited. These pumps are most commonly used on split systems on applications where condensate water cannot be drained with gravity alone.

Beijer Ref ITEM a range of Aspen Mini Pumps for every need, they can be installed in the ceiling or on the internal wall with their own aesthetically pleasing pipe capping which allows easy maintenance.

ITEM NO.	PRODUCT NAME	DESCRIPTION
T0939	Mini Aqua	Designed to be installed behind wall mounted evaporator or in plastic ducting - Ultra Thin. <ul style="list-style-type: none"> Flow Rate: 14Ltr/hr max @ zero head Discharge Head: 8m max Non continuously rated - 5 min. on / 5 min. off Noise Rating: 23dB(A) When primed with water. Maximum Cooling Capacity: 7kw @ 1m Head
T0940	Mini Orange	Designed to be installed above a false ceiling where possible or behind wall mounted evaporator or in plastic ducting. <ul style="list-style-type: none"> Flow Rate: 14Ltr/hr max @ zero head Discharge Head: 8m max Continuously rated run Noise rating: 23dB(A) When primed with water. Maximum Cooling Capacity: 7kw @ 1m Head
T0941	Maxi Orange	Designed to be installed above a false ceiling where possible or behind wall mounted evaporator or in plastic ducting. <ul style="list-style-type: none"> Flow Rate: 37Ltr/hr max @ zero head Discharge Head: 20m max Non Continuously rated - 5 min. on / 5 min. off Noise Rating: 35dB(A) When primed with water. Maximum Cooling Capacity: 17kw @ 1m Head
TA0903	Mini Blanc Deluxe	Designed to be fitted below the indoor unit, the Mini Blanc offers an extremely easy to install Mini pump for all wall and ceiling suspended indoor units. <ul style="list-style-type: none"> Flow Rate: 12Ltr/hr @ zero head Discharge Head: 10m MAX Noise Rating: 21dB(A) @ 1m Maximum Cooling Capacity: 8kw @ 1m Head
T0949	Mini Lime Silent	Designed to make installation easy on wall mounted evaporators by providing the pump complete with plastic ducting, in which the pump and pipework are hidden. <ul style="list-style-type: none"> Flow Rate: 11Ltr/hr max @ zero head Discharge Head: 10m max Continuously rated run Noise Rating: 21dB(A) When primed with water. Maximum Cooling Capacity: 7kw @ 1m Head
T0942	Maxi Lime	Designed to make installation easy on wall mounted evaporators by providing the pump complete with plastic ducting, in which the pump and pipework are hidden. <ul style="list-style-type: none"> Flow Rate: 22Ltr/hr max @ zero head Discharge Head: 15m max Non Continuously rate - 10 min. on / 5 min. off Noise Rating: 35dB(A) When primed with water. Maximum Cooling Capacity: 17kw @ 1m Head



- All above condensate pumps require a 240V power supply.
- All models include alarm contacts.

CONDENSATE PUMPS

SAUERMANN MINI CONDENSATE PUMPS



ITEM NO.	TYPE	DESCRIPTION	BRAND	NOMINAL LITRES / HR @ 0 HEAD	LITRES / HR @ MAX HEAD	MAX. DISCHARGE HEAD (m)	MAX. SUCTION HEAD (m)	APPLICATION (A/C UNITS kW)
DELTAPACK	Piston	Mini Condensate Pump & Duct Kit (inc Si10 Pump)	Sauermann	20	4	10	N/A	≤ 20 kW
Si10	Piston	Mini Condensate Pump	Sauermann	20	4	10	N/A	≤ 20 kW



ITEM NO.	TYPE	DESCRIPTION	BRAND	NOMINAL LITRES / HR @ 0 HEAD	LITRES / HR @ MAX HEAD	MAX. DISCHARGE HEAD (m)	MAX. SUCTION HEAD (m)	APPLICATION (A/C UNITS kW)
OMEGAPACK	Piston	Mini Condensate Pump Kit- Under Unit, Matt White Finish (inc Si20 Pump)	Sauermann	20	4	10	3	≤ 20 kW
Si20	Piston	Mini Condensate Pump	Sauermann	20	4	10	3	≤ 20 kW



ITEM NO.	TYPE	DESCRIPTION	BRAND	NOMINAL LITRES / HR @ 0 HEAD	LITRES / HR @ MAX HEAD	MAX. DISCHARGE HEAD (m)	MAX. SUCTION HEAD (m)	APPLICATION (A/C UNITS kW)
Si30	Piston	Mini Condensate Pump	Sauermann	20	4	10	3	≤ 20 kW
Si33	Piston	Mini Condensate Pump	Sauermann	30	8	13	4	20 to 30 kW
Si2052	Centrifugal	Cassette Lift Pump	Sauermann	100	24	0.9	-	≤ 20 kW



CONDENSATE PUMPS (CONT'D)

ASPEN TANKS CONDENSATE PUMPS



When looking for reliability, performance and value for money, Aspen tank pumps are the perfect solution. Aspen's continued focus on innovation has created a market leading range of tank pumps, designed to suit a diverse array of applications. With reliability as the key decision criteria, the tank pumps are designed to perform even under the most challenging of applications.

ITEM NO.	PRODUCT NUMBER	DESCRIPTION
TA0906	High Lift 2Ltr Tank	Where the collection of condensate water is required in a Tank before discharge to waste and where HIGH LIFT is required at LOW FLOW. (Peristaltic pump type) <ul style="list-style-type: none"> • Tank capacity: 2Ltr • Flow Rate: 11Ltr/hr max • Discharge Head: 12m max
TA0911	High Lift 1 Ltr Tank	As Above with Reduced size 1Ltr Tank - For lower profile
FP3349	Max Hi Flow	Where High Flow is required with a low profile pump <ul style="list-style-type: none"> • Tank Capacity: 4Ltr • Flow rate: 550Ltr/hr max • Discharge Head: 5m max • Two drain inlet points • Only 134mm high
T0908	Heavy Duty Pump 4 Ltr Tank	Heavy Duty robust pump for rapid removal of large quantities of condensate water. <ul style="list-style-type: none"> • Tank Capacity: 4Ltr • Flow rate: 900Ltr/hr max • Discharge Head: 6m max • Two drain inlet points



High Lift



Heavy Duty

- All above condensate pumps require a 240V power supply
- All models include alarm contacts

ASPEN PUMP ACCESSORIES

ITEM NO.	DESCRIPTION
TA0920	PVC Tube Clear 1/4" (6mm) 30 m
TA0925	PVC Tube Clear 3/8" (10mm) 30 m
N0676	Purcool Condensate pan treatment tabs (200tab container)



PERISTALTIC PUMPS

ASPEN PERISTALTIC PUMPS



Ideal For Cassette Units

Peristaltic pumps can offer an ideal solution for condensate removal due to the combination of quietness, reliability and installation advantages. The Peristaltic rotary movement generates a continuous pressure meaning that the pump can be sited over 15m away from the condensate source, with no effect on performance. The pump mechanism does not come into contact with the water and therefore they do not require a filter and will operate quietly wet or dry. (To ensure condensate removal these pumps include a 3min overrun)

ITEM NO.	PRODUCT NUMBER	DESCRIPTION
T0947	Standard	Pump operates by being hard wired to cooling signal - starts when unit starts, <ul style="list-style-type: none"> Flow rate: 6Ltr/hr max Discharge Head: 12 max
T0945	Mechanical	Removes condensate water QUIETLY and RELIABLY. Pump operates using a remote reservoir and float. <ul style="list-style-type: none"> Flow rate: 6Ltr/hr max Discharge Head: 12m max
T0946	Universal Pump	Pump operates using coil inlet & outlet sensors which detect a change in air temperature and switches at 5°C differential across the evaporator. <ul style="list-style-type: none"> Flow rate: 6Ltr/hr max Discharge Head: 12m max



Standard



Mechanical

- All above condensate pumps require a 240V power supply.
- All models include alarm contacts.

SAUERMANN PERISTALTIC PUMPS



ITEM NO.	TYPE	DESCRIPTION	BRAND	NOMINAL LITRES / HR @ 0 HEAD	LITRES / HR @ MAX HEAD	MAX. DISCHARGE HEAD (m)	MAX. SUCTION HEAD (m)	APPLICATION (A/C UNITS kW)
PE5100	Rotary Diaphragm	Condensate Pump Temp Differential Sensor	Sauermann	6	6	12	2	≤ 8 kW
PE5200	Rotary Diaphragm	Condensate Pump Remote Sensor	Sauermann	6	6	12	2	≤ 8 kW
PE5002	Rotary Diaphragm	Peristaltic Replacement Tube	Sauermann	Replacement tube for Sauermann Peristaltic pumps				



UNDER-CABINET PUMPS

ASPEN UNDER-CABINET PUMPS



Ideal For Supermarket Cabinets

A complete solution to the growing demand for reliable condensate removal within the retail refrigeration industry. The retail refrigeration pumps are low in height which means they can be easily installed underneath a refrigeration cabinet, where direct drainage is not available and water needs to be pumped up above the ceiling and away to a suitable drain. The high capacity of the pumps also permits the draining of several cabinets together. The pumps are operated by floats which activate sensors as the water level rises in the tank.

ITEM NO.	PRODUCT NUMBER	DESCRIPTION
TA0910	ERRP (Top Inlet)	A simple yet very effective solution for the removal of water from supermarket retail refrigeration cabinets. <ul style="list-style-type: none"> • Tank Capacity: 11Ltr • Flow Rate: 255Ltr/hr max • Discharge Head: 35M max • Dimensions: 590mm L x 405mm W x 100mm H
TA0908	ERRP Low Profile (Top Inlet)	A Low Profile effective solution for the removal of water from supermarket retail refrigeration cabinets. <ul style="list-style-type: none"> • Tank Capacity: 3.5Ltr • Flow Rate: 190Ltr/hr max • Discharge Head: 21M max • Dimensions: 530mm L x 240mm W x 75mm H
TA0909	ERRP Low Profile (Side Inlet)	A Low Profile effective solution for the removal of water from supermarket retail refrigeration cabinets. <ul style="list-style-type: none"> • Tank Capacity: 3.5Ltr • Flow Rate: 190Ltr/hr max • Discharge Head: 21M max • Dimensions: 530mm L x 240mm W x 75mm H



SAUERMANN TANK PUMPS



ITEM NO.	TYPE	DESCRIPTION	BRAND	NOMINAL LITRES / HR @ 0 HEAD	LITRES / HR @ MAX HEAD	MAX. DISCHARGE HEAD (m)	TANK CAPACITY (L)	APPLICATION (A/C Units kW)
Si60	Piston	Condensate Pump	Sauermann	20	4	10	0.37	≤ 20 kW
Si83	Centrifugal	Condensate Pump	Sauermann	700	30	5.4	2	
Si1830	Centrifugal	Centrifugal Tank Pump	Sauermann	400	50	3.7	0.5	

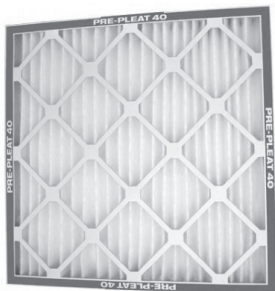


SAUERMANN SUPERMARKET PUMPS

ITEM NO.	TYPE	DESCRIPTION	BRAND	NOMINAL LITRES / HR @ 0 HEAD	LITRES / HR @ MAX HEAD	MAX. DISCHARGE HEAD (m)	TANK CAPACITY (L)
Si1931	Centrifugal	Pump Condensate Membrane Up To 4 Cabinets	Sauermann	700	35	24.6	6.5



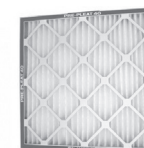
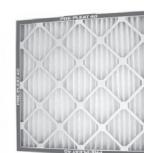
DISPOSABLE AIR FILTERS



Key Features

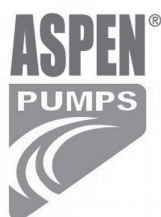
- Merve 8 Rating
- 40% Lower pressure drop
- Industries highest dust holding capacity
- Moisture resistant frame

ITEM NO.	FILTER TYPE	NOMINAL SIZE (inch)	ACTUAL SIZE (mm)
AC8832	PrePleat 40 HC LDP	12 x 20 x 2	295 x 495 x 45
AC8847	PrePleat 40 HC LDP	12 x 24 x 2	295 x 595 x 45
AC8858	PrePleat 40 HC LDP	14 x 20 x 2	345 x 495 x 45
AC8864	PrePleat 40 HC LDP	14 x 25 x 2	345 x 622 x 45
AC8838	PrePleat 40 HC LDP	15 x 20 x 2	370 x 495 x 45
AC8822	PrePleat 40 HC LDP	16 x 16 x 2	395 x 395 x 45
AC8842	PrePleat 40 HC LDP	16 x 20 x 2	395 x 495 x 45
AC8853	PrePleat 40 HC LDP	16 x 24 x 2	395 x 595 x 45
AC8844	PrePleat 40 HC LDP	16 x 25 x 2	395 x 622 x 45
AC8857	PrePleat 40 HC LDP	18 x 20 x 2	445 x 495 x 45
AC8849	PrePleat 40 HC LDP	18 x 24 x 2	445 x 595 x 45
AC8859	PrePleat 40 HC LDP	18 x 25 x 2	445 x 622 x 45
AC8843	PrePleat 40 HC LDP	20 x 20 x 2	495 x 495 x 45
AC8860	PrePleat 40 HC LDP	20 x 24 x 2	495 x 595 x 45
AC8845	PrePleat 40 HC LDP	20 x 25 x 2	495 x 622 x 45
AC8846	PrePleat 40 HC LDP	24 x 24 x 2	595 x 595 x 45



Other filter sizes and types are also available upon request
 Please contact one of our branches to discuss your requirements

LEADING BRANDS



BEIJER REF

Australia

beijerref.com.au

The contents of this catalogue are copyright protected and may not be reproduced in any form without the written consent of Beijer Ref Australia Pty Ltd. Recommendations and advice regarding the use of the products described in this publication are to be taken as a guide only and are given without liability on the part of the company or its employees. As Beijer Ref Australia continually improves its product range and processes, Beijer Ref Australia reserves the right to change product specifications without any prior notification. Please refer to the beijerref.com.au website for the latest version of this publication. The purchaser should independently determine the suitability of the product for the intended use and application and that the product complies with relevant standards. Beijer Ref Australia accepts no responsibility for loss or damage (direct or indirect and including consequential loss, loss of profits or opportunity and economic loss) however arising which results from any errors or omissions in the information contained in this publication or arising from the use or application of the information contained herein.

© Copyright 2022

Beijer Ref Australia Pty Ltd continually strives to improve products and processes.

We reserve the right to modify product features without notice. Information is correct at time of publication.

