

P-Series

Commercial Evaporators

Fitted with **EVD** ice & UltraCap



- Coil with optimised 3/8" Rife bore tube
- White powder coated aluminium casing
- Patton Coat coil & fin corrosion protection
- High airflow external axial fan motors
- Optional with EC fan motor assemblies
- Fitted with Carel EVDice + UltraCap
- Defrost heater termination/safety klaxon
- Ideal for Coolrooms & Freezer Rooms

P SERIES

eVD ice



2.2 21 kW

MEDIUM TEMP

MODELS	PM	30	40	50	60	70	80	95	105	110	130	140	160	190	210
Capacity Watts -4°C SST / 6 KTD	R404A	3030	4170	5040	6090	7170	8280	9720	10650	11280	13290	14340	16380	19410	21480
	R448A	2940	4040	4890	5910	6950	8030	9430	10330	10940	12890	13910	15890	18830	20840
	R134a	2760	3780	4590	5550	6540	7530	8850	9690	10260	12090	13050	14910	17670	19530
EVD VALVE BODY		E2V14	E2V18	E2V24			E2V30			E2V35					

LOW TEMP

MODELS	PL	22	30	45	60	70	80	95	120	130
Capacity Watts -24 SST / 6 KTD	R404A	2250	3120	4560	6210	7110	8250	9630	12300	13290
	R448A	2160	3000	4380	5960	6830	7920	9240	11810	12760
EVD VALVE BODY		E2V14		E2V18		E2V24			E2V30	

■ R448A listed ratings have been calculated at 'mid point' conditions.

TECHNICAL DATA

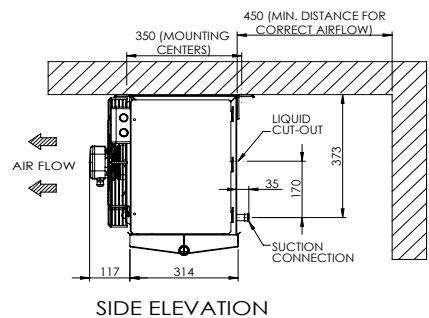
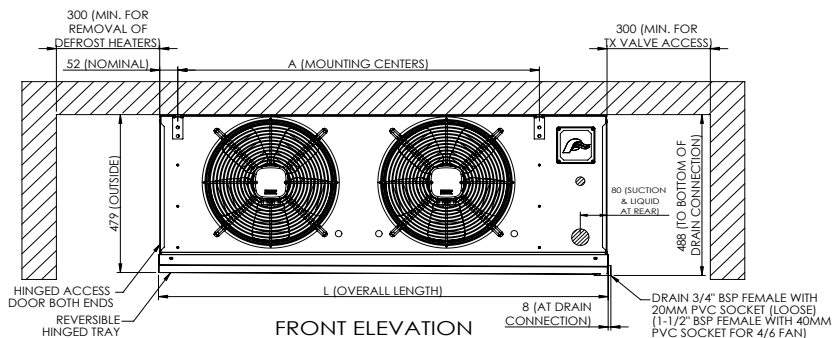
MEDIUM TEMP

MODELS	PM	30	40	50	60	70	80	95	105	110	130	140	160	190	210	
Air Throw	m	8.0	8.5	8.0	11.5	11.0	14.5	13.0	15.0	15.5	15.0	16.0	18.0	17.5	18.5	
Air Volume	l/sec	860	875	790	1720	1550	1750	1580	2320	2460	2220	3100	3520	3180	4650	
Fan Motors	Ø 350mm	Num.	1	1	1	2	2	2	2	3	3	3	4	4	4	6
		Watts	175	175	175	350	350	350	350	525	525	525	700	700	700	700
		Amps	0.75	0.75	0.75	1.5	1.5	1.5	1.5	2.25	2.25	2.25	3.0	3.0	3.0	3.0
Coil	Circuit Vol.	dm3	2.20	3.30	3.30	4.41	4.41	6.60	6.60	6.60	8.82	8.82	8.82	13.36	13.36	13.36
	Connection	Dist Inlet	1/2"	1/2"	1/2"	1/2"	1/2"	5/8"	5/8"	5/8"	7/8"	7/8"	7/8"	7/8"	7/8"	7/8"
	F.Sw	Suct Outlet	3/4"	3/4"	3/4"	7/8"	7/8"	7/8"	7/8"	7/8"	1-1/8"	1-1/8"	1-1/8"	1-3/8"	1-3/8"	1-3/8"
		fpi	6	6	8	6	8	6	8	8	6	8	8	6	8	8
Dimensions	L	799	1051	1051	1309	1309	1813	1813	1813	2329	2329	2329	3349	3349	3349	
	A	540	792	792	1050	1050	1554	1554	1554	2070	2070	2070	3090	3090	3090	
Net Weight	kg	19	22	23	29	30	44	45	50	61	62	66	72	73	82	

LOW TEMP

MODELS	PL	22	30	45	60	70	80	95	120	130	
Air Throw	m	8.0	8.5	11.5	12.5	14.0	15.0	16.0	17.0	18.0	
Air Volume	l/sec	775	790	1550	1580 2095	2220	2800 3180	4200	17.0	18.0	
Fan Motors	Ø 350mm	Num.	1	1	2	2	3	3	4	6	
		Watts	175	175	350	350	525	525	700	1050	
		Amps	0.75	0.75	1.5	1.5	2.25	2.25	3.0	4.5	
Coil	Circuit Vol.	dm3	2.20	3.30	4.41	6.60	6.60	8.82	8.82	13.36	13.36
	Connection	Dist Inlet	1/2"	1/2"	1/2"	5/8"	5/8"	7/8"	7/8"	7/8"	7/8"
	F.Sw	Suct Outlet	3/4"	3/4"	7/8"	7/8"	7/8"	1-1/8"	1-1/8"	1-3/8"	1-3/8"
		fpi	6	6	6	6	6	6	6	6	6
	Defrost	Watts	2400	3200	4120	5780	5780	7300	7300	10820	10820
	Amps	10.4	13.9	17.9	25.1	25.1	31.7	31.7	47	47	
Dimensions	L	799	1051	1309	1813	1813	2329	2329	3349	3349	
	A	540	792	1050	1554	1554	2070	2070	3090	3090	
Net Weight	kg	20	23	29	45	50	60	65	75	83	

The company reserves the right to make specification changes without notice. AU 19/11/2024



RELATIVE HUMIDITY GUIDE (MED TEMP)

Temp Diff	R.H %
4K	89
6K	84
8K	81
10K	77

CAPACITY CORRECTION GUIDE

PM @ SST		PL @ SST	
+5	1.17	-20	1.07
0	1.07	-25	0.99
-5	0.99	-30	0.89
-10	0.93	-35	0.80

NOTES

- All fan motors 220-240V/1/50Hz
- Defrost heaters 220-240V/1/50Hz
- Defrost klixon contacts open +24°C / close +5°C
- Air throw based on CRMA standard @ 20°C
Multiply figures by 0.94 for 2°C or 0.87 for -18°C

Specifications subject to change without notice