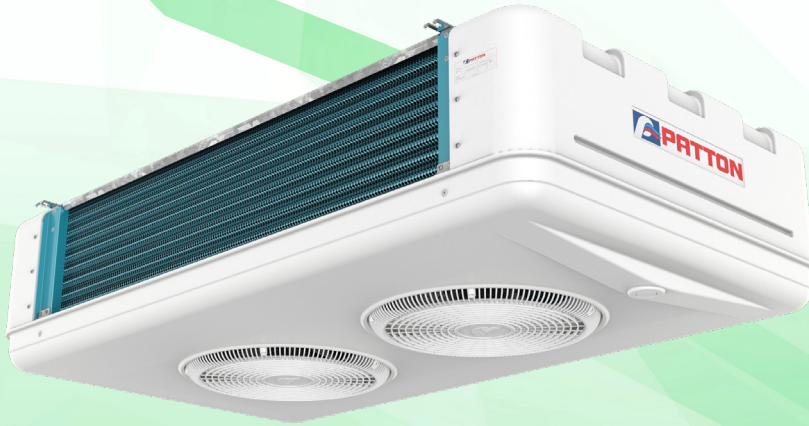


# Dual Discharge Unit Coolers




- Optimised 3/8" Rifle Bore Tube Coils.
- Light Weight Fresh ABS Casing for easy clean and hygiene.
- Factory Applied "Blue Coil Coat" Corrosion Protection.
- Low Noise - Prep Area Applications.
- Reversible Drain Trays.
- Facility for Internal Condensate Pump.
- Low Temp Heater Safety Klixon.


## D SERIES

1.2 10.3 kW

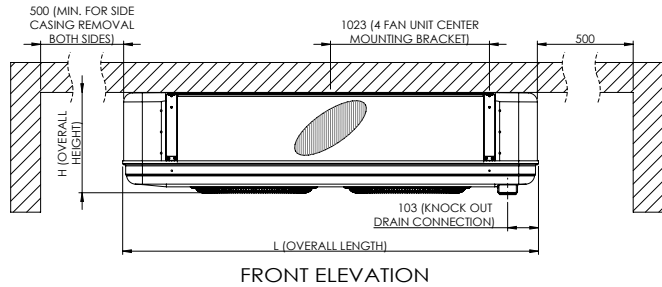
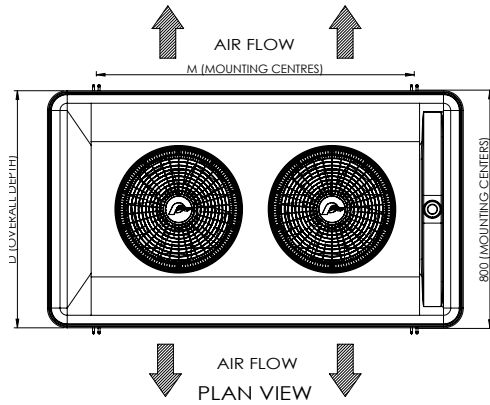
### MEDIUM TEMP

MODELS	DM	19	23	40	48	60	72	82	98
Capacity	R404A	1.95	2.34	4.08	4.83	6.06	7.26	8.22	9.81
kW @ 6 KTD -4°C SST	R407F	2.04	2.46	4.26	5.07	6.36	7.62	8.61	10.29
	R22	1.92	2.28	3.99	4.74	5.94	7.11	8.04	9.60
	R134a	1.74	2.13	3.66	4.38	5.46	6.60	7.47	8.91
T.X Valve	R404A	1-SW	2-SW	3-SW	3-SW	4-SW	4-SW	5-SW	6-SW
J8ES	R407F	1-VW	1-VW	2-VW	3-VW	3-VW	3-VW	4-VW	4-VW
	R22	1-VW	1-VW	2-VW	3-VW	3-VW	3-VW	4-VW	4-VW
	R134a	1-JW	2-JW	3-JW	3-JW	4-JW	4-JW	5-JW	6-JW

### LOW TEMP

MODELS	DL	15	18	30	35	45	54	61	72
Capacity	R404A	1.47	1.80	3.03	3.54	4.59	5.46	6.15	7.26
kW @ 6 KTD -24°C SST	R407F	1.47	1.80	3.00	3.51	4.56	5.40	6.09	7.17
	R22	1.44	1.77	2.97	3.45	4.50	5.34	6.00	7.11
	R134a	1.26	1.53	2.58	3.00	3.90	4.65	5.22	6.18
T.X Valve	R404A	2-SW	2-SW	3-SW	4-SW	5-SW	5-SW	6-SW	6-SW
J8ES	R407F	1-VW	1-VW	2-VW	3-VW	3-VW	3-VW	4-VW	4-VW
	R22	1-VW	1-VW	2-VW	3-VW	3-VW	3-VW	4-VW	4-VW
	R134a	2-JW	3-JW	4-JW	4-JW	5-JW	5-JW	6-JW	6-JW

**DIMENSIONS**



NTS (mm)

**MEDIUM TEMP**

MODELS	DM	19	23	40	48	60	72	82	98
Air Throw	m	6.0	6.5	7.0	7.5	8.0	8.5	8.5	9.0
Air Volume	l/sec	580	560	1160	1120	1740	1690	2320	2240
Fan Motors	Ø 350mm	Num.	1	1	2	2	3	3	4
		Watts	80	80	160	160	240	240	320
		Amps	0.36	0.36	0.72	0.72	1.08	1.08	1.44
		dbA	55	55	58	58	60	60	61
Coil	Circuit Vol.	dm3	2.60	2.60	5.20	5.20	7.75	7.75	10.21
	Connection	Dist Inlet	1/2"	1/2"	1/2"	1/2"	1/2"	1/2"	1/2"
	F.Sw	Suct Outlet	3/4"	3/4"	7/8"	7/8"	1-1/8"	1-1/8"	1-1/8"
		fpi	4	6	4	6	4	6	4
	Defrost	Watts	1920	1920	3600	3600	5200	5200	6800
Dimensions	L	880	880	1390	1390	1900	1900	2375	2375
	D	790	790	790	790	790	790	790	790
	H	340	340	340	340	340	340	340	340
	M	549	549	1062	1062	1573	1573	2046	2046
Net Weight	kg	21	21	39	39	61	61	80	80

**LOW TEMP**

MODELS	DL	15	18	30	35	45	54	61	72
Air Throw	m	6.0	6.5	7.0	7.5	8.0	8.5	8.5	9.0
Air Volume	l/sec	580	560	1160	1120	1740	1690	2320	2240
Fan Motors	Ø 350mm	Num.	1	1	2	2	3	3	4
		Watts	80	80	160	160	240	240	320
		Amps	0.36	0.36	0.72	0.72	1.08	1.08	1.44
		dbA	55	55	58	58	60	60	61
Coil	Circuit Vol.	dm3	2.60	2.60	5.20	5.20	7.75	7.75	10.21
	Connection	Dist Inlet	1/2"	1/2"	1/2"	1/2"	1/2"	1/2"	1/2"
	F.Sw	Suct Outlet	3/4"	3/4"	7/8"	7/8"	1-1/8"	1-1/8"	1-1/8"
		fpi	4	6	4	6	4	6	4
	Defrost	Watts	2880	2880	5400	5400	7800	7800	10200
Dimensions	L	880	880	1390	1390	1900	1900	2375	2375
	D	790	790	790	790	790	790	790	790
	H	340	340	340	340	340	340	340	340
	M	549	549	1062	1062	1573	1573	2046	2046
Net Weight	kg	21	21	39	39	61	61	80	80

**CAPACITY CORRECTION**

DM @ °C SST	DL @ °C SST	DM @ °C SST	DL @ °C SST
5°	1.17	-20°	1.07
0°	1.07	-25°	0.99
-5°	0.99	-30°	0.89
-10°	0.93	-35°	0.80

**RELATIVE HUMIDITY GUIDE**

Temp Diff	R.H %	Temp Diff	R.H %
2K	94	10K	77
4K	89	12K	73
6K	84	14K	70
8K	81	16K	66

**NOTES**

1. Air throw based on CRMA standard @ 20°C  
Multiply figures by 0.94 for 2°C and 0.87 for -18°C
2. Fan motors 220-240V/1/50Hz
3. Defrost heaters 220-240V/1/50Hz  
Connect in Y for 380-420V/3/50Hz supply
4. Noise levels @ 3.0 mtrs in free field environment

Specifications subject to change without notice